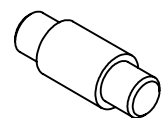
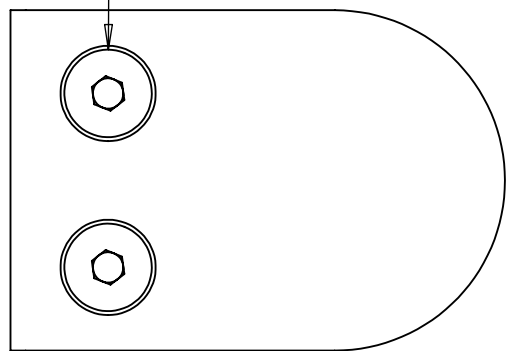


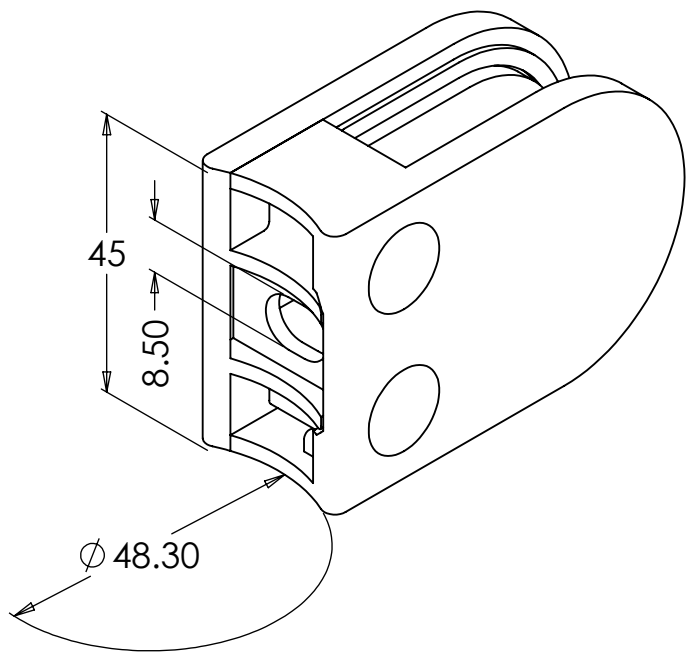
M6 x 16 SOCKET COUNTERSUNK



PINS NOT INCLUDED

METAL SECURITY PIN - 189900401 REQUIRED FOR 10MM GLASS

P - PINS REQUIRE A MINIMUM $\phi 10$ MM HOLE IN GLASS
T - GLASS THICKNESS



PART CODE	MATERIAL	GLASS (T)	FINISH
05CL1260D304	AISI 304	10	Satin Polished
05CL1260D316	AISI 316	10	Satin Polished
05CL1260D316M	AISI 316	10	Mirror Finish

NOTE: THIS GLASS CLAMP IS ONLY SUITABLE FOR 10MM GLASS

DESCRIPTION: Glass Clamps 48.3mm Round Back					
	NAME	DATE	REVISION	UNLESS OTHERWISE SPECIFIED ALL DIMENSIONS ARE IN MILLIMETERS	
DRAWN	VV	19/01/2021	A		
CHECKED				DO NOT SCALE DRAWING	SCALE:1:1