

COMBINATION PAD BOLT

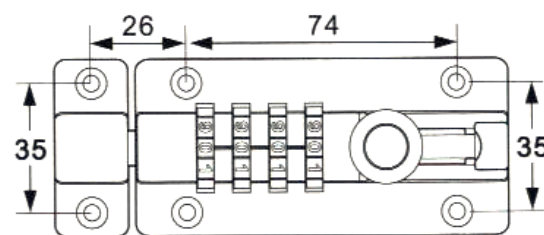


- Horizontal round small bolt with staple and with exposed fixing screws, and digital combination locking system
- Can be used to lock drawers, cabinets, openings or door leaves
- Suitable to be screwed on wood, aluminium or metal surfaces
- The functioning is assured by operating on the bar. The stability of the closing is assured by the hidden spring which keeps in position the closing bar



PRODUCT DETAILS

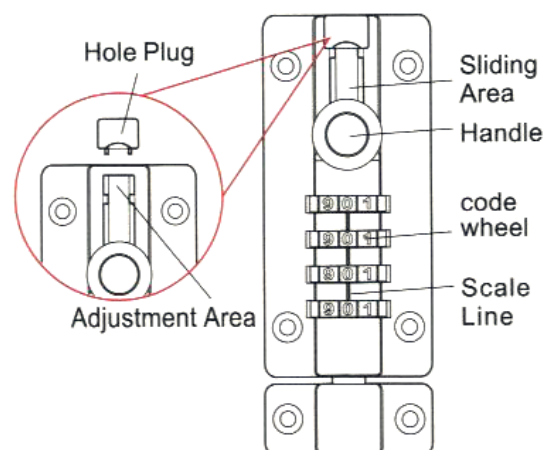
Product code:	Description:
05PBC100	Combination Pad Bolt - 97mm
Finishing:	Embossed Black Painted Aluminium
Body:	Steel
Bar:	Galvanised Steel



SETTING PASSWORD

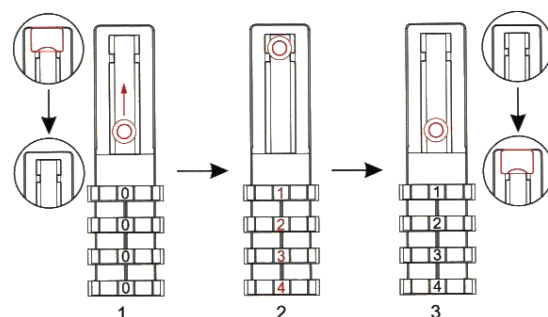
It is recommended to set your own password before using for the first time. The password is factory set to "0-0-0-0".

1. Use a tool to remove the hole plug from the adjustment area. Turn the code wheel to 0-0-0-0, then pull the handle outward and lift it up to the adjustment area.
(Note: pull the handle outwards first and then lift upwards)
2. Turn the password wheel in turn to the position of the password that you wish to use and align with the scale line.
3. Pull the handle outwards and move it down from the adjustment area to the sliding area. The password setting is now complete.
(Remember to put the hole plug back)



HOW TO USE

1. **Unlock:** Align the corresponding numeric passwords to the scale line, then pull the handle.
2. **Lock:** Keeping the code wheel in the correct position, insert the bolt into the keyhole, then disrupt the code wheel.



Whilst every effort has been made to ensure the accuracy of the information supplied. F.H. Brundle cannot be held responsible for any errors or omissions. This product must only be employed for its original intended use. Any other use is wrong and potentially dangerous. Installation must be carried out in full compliance with current regulations. F.H. Brundle cannot be held liable for any damages resulting from wrongful, erroneous or negligent use.

