

- A narrow lock which can be incorporated into a box section gate frame. Neat and unobtrusive
- Secure strong lock bolt extends 22mm from the lock and the hook shape prevents hinged gates from being forced open by spreading
- Supplied with forend plate, double sided euro cylinder, 3 keys and 2 escutcheons



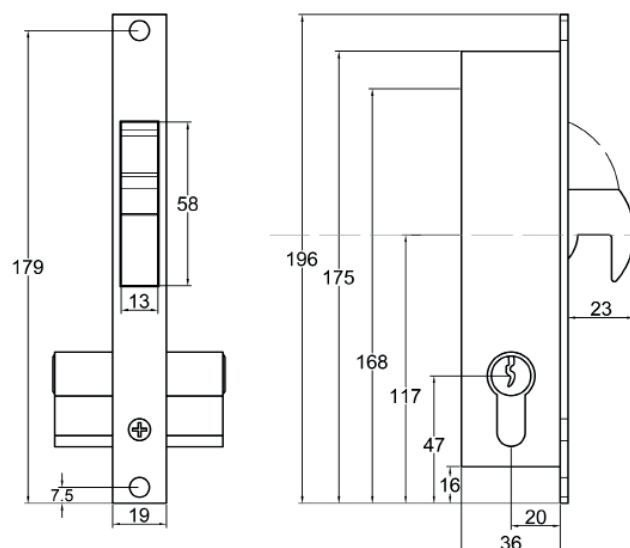
PRODUCT DETAILS

| Product code: | Description: |
|----------------|---|
| 05SN01 | Narrow Hook Lock With Euro Cylinder |
| Backset: | 20mm |
| Supplied with: | 3 keys, forend plate, double sided euro cylinder and 2 euro cylinder escutcheons. |



INSTALLATION

1. Slot the gate frame to take the lock body and cut two holes for the euro cylinder.
2. Fix lock and forend plate in position, insert the euro cylinder and secure with M5 countersunk screw.
3. Fix 2 x euro cylinder escutcheons.
4. Check lock operates smoothly.
5. To change the hand of the latch: undo the slotted screw at the rear of the lock, rotate latch and tighten slotted screw.
6. **MAINTENANCE:** Lubricate with light oil periodically.



Whilst every effort has been made to ensure the accuracy of the information supplied. F.H. Brundle cannot be held responsible for any errors or omissions. This product must only be employed for its original intended use. Any other use is wrong and potentially dangerous. Installation must be carried out in full compliance with current regulations. F.H. Brundle cannot be held liable for any damages resulting from wrongful, erroneous or negligent use.