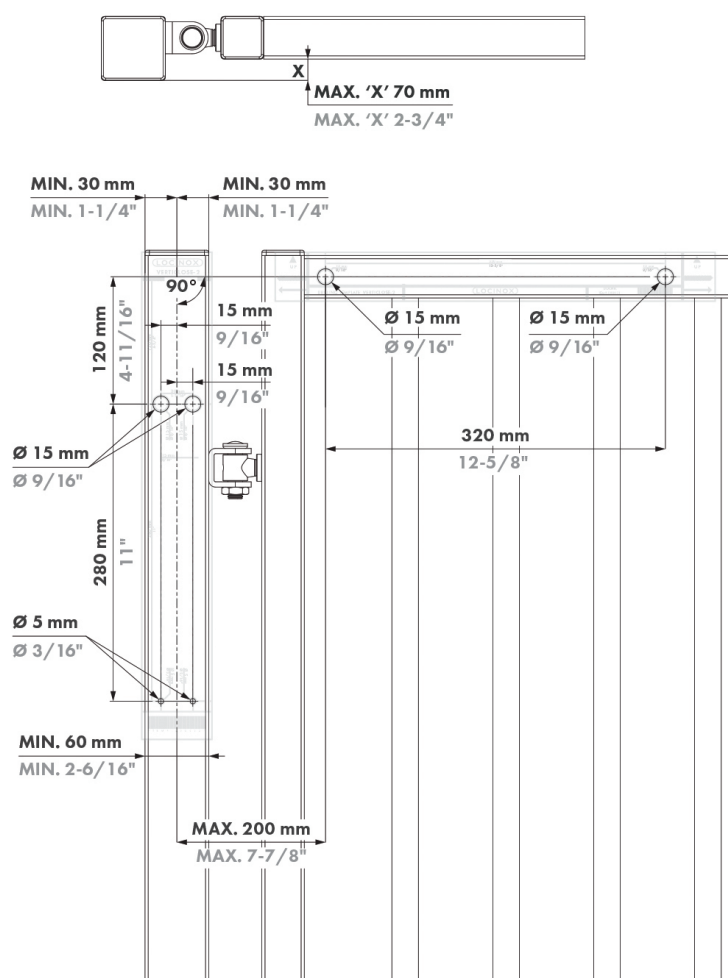


The Verticlose-2 aluminium adjustable gate closer from Locinox is a powerful and all round hydraulic gate closer. It is multi-functional and possesses excellent features, which makes Verticlose-2 a perfect solution for both 90° and 180° hinge situations. The integrated pre-tension and continuous adjustability of speed and final snap, combined with its Quick-Fix mounting system, guarantee a quick and efficient installation. This aesthetic powder coated aluminium gate closer with high-tech internal components ensures a very long life span.

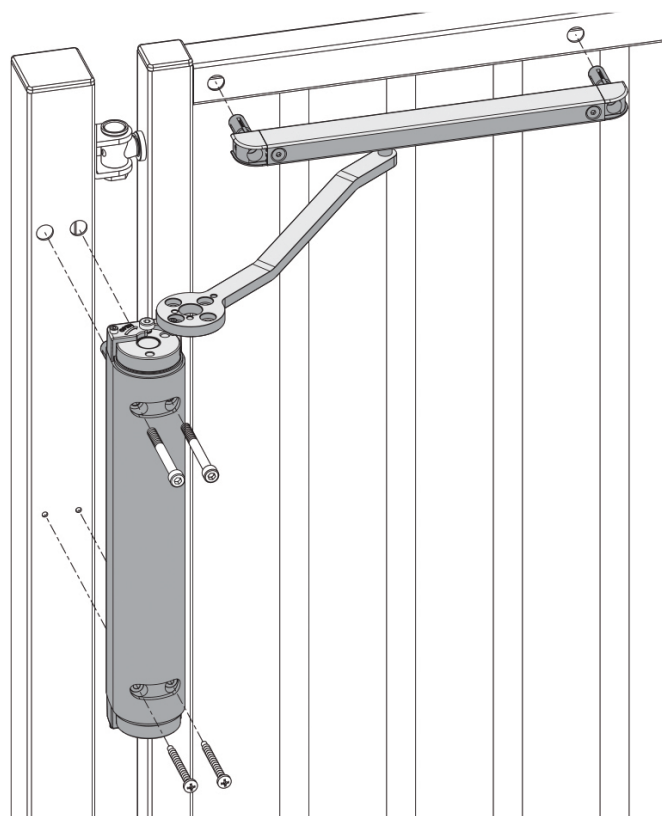
- 90° or 180° mountings
- For left and right opening gates
- Easy mounting with Quick-Fix
- Powder coated aluminium casing
- Adjustable force & closing speed
- For fixing to RHS posts and walls
- Gates up to 150kg max and 1.5m width
- Full installation video available online

90° INSTALLATION

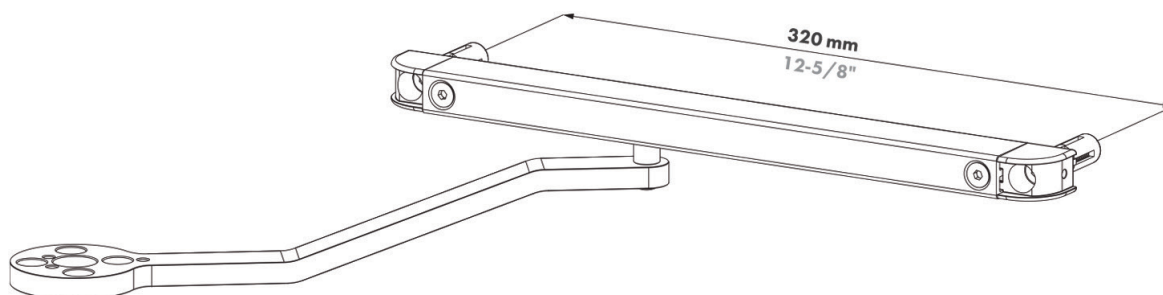
1. ADD DRILLING TEMPLATE



2. INSTALL GATE CLOSER

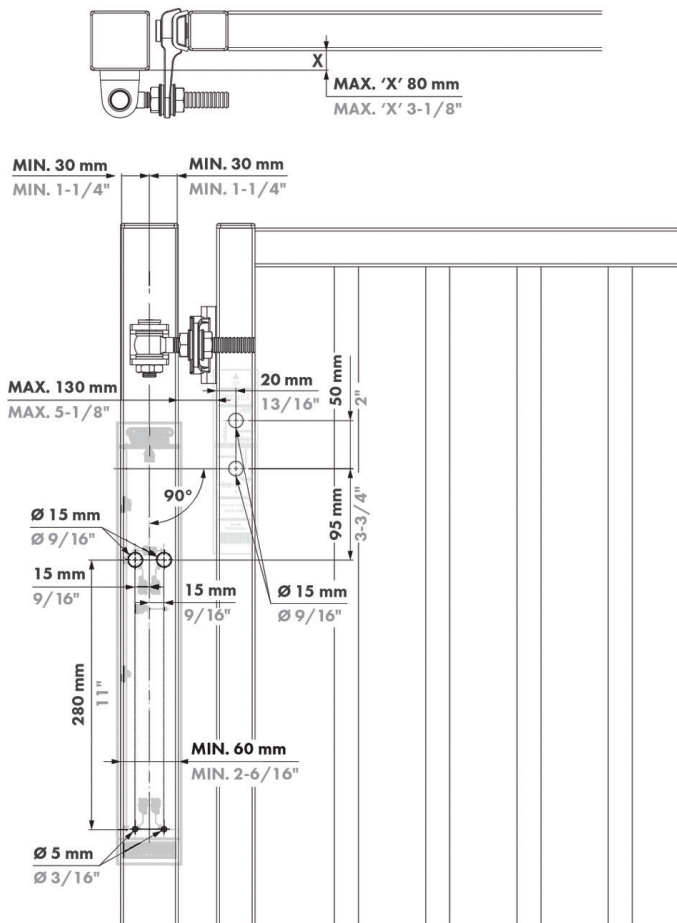


3. RAIL HOLDER

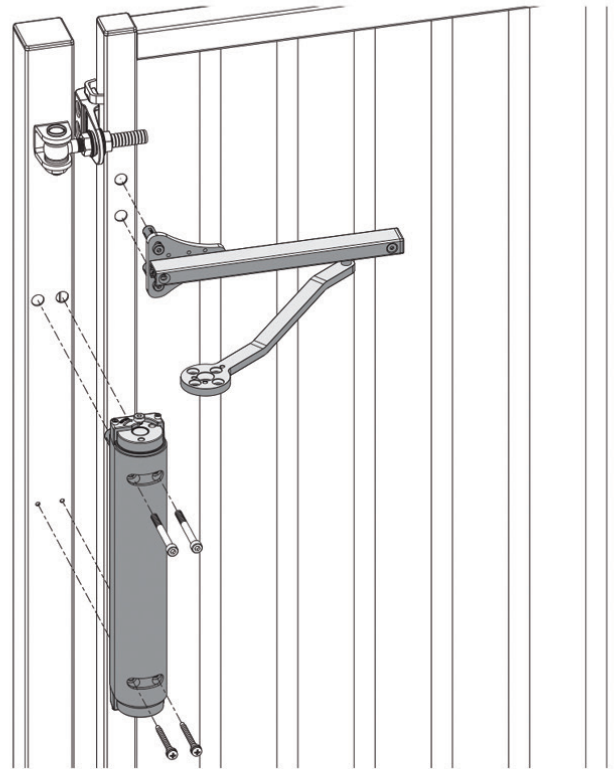


180° INSTALLATION

1. ADD DRILLING TEMPLATE

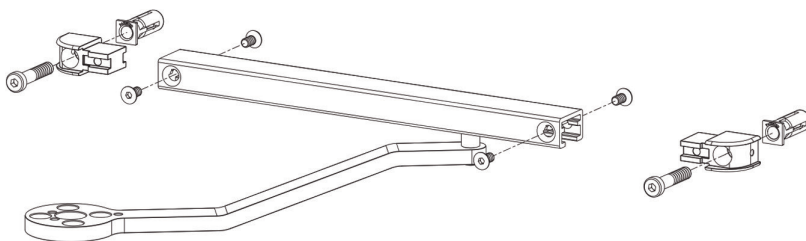


2. INSTALL GATE CLOSER

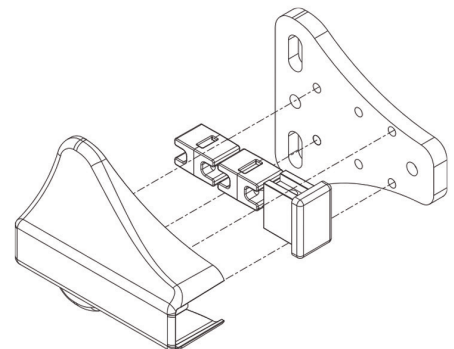


3. RAIL HOLDER

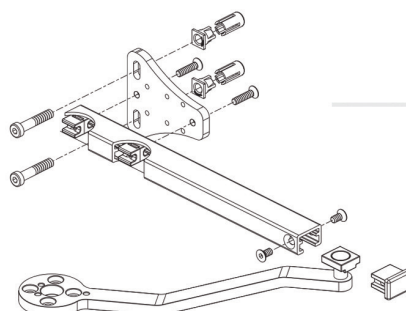
A. Disassemble Rail Holder 90°



B. Disassemble Rail Holder 180°

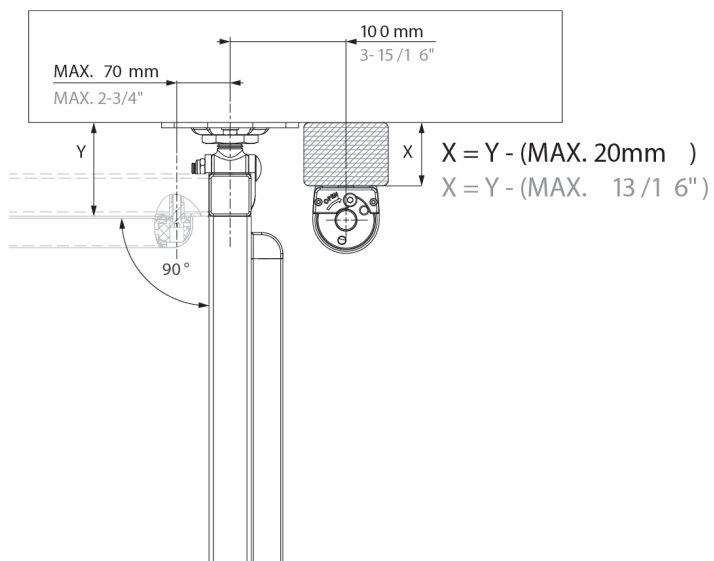


C. Install 180° Rail Holder

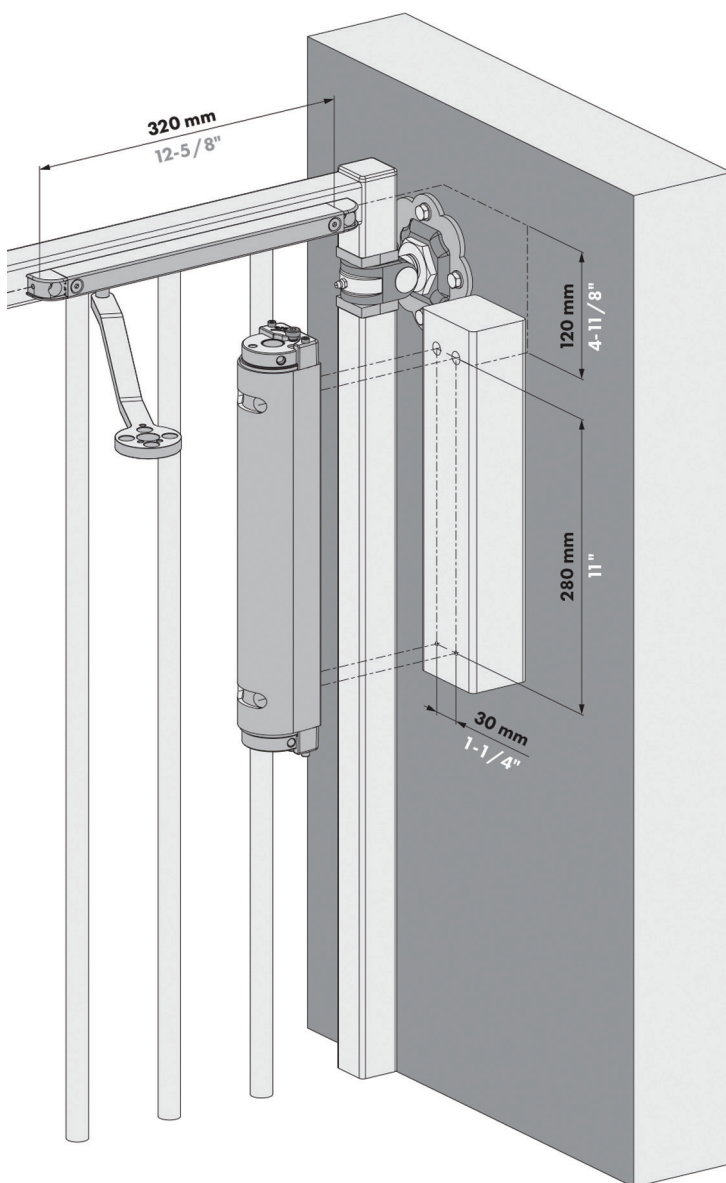


WALL MOUNTING

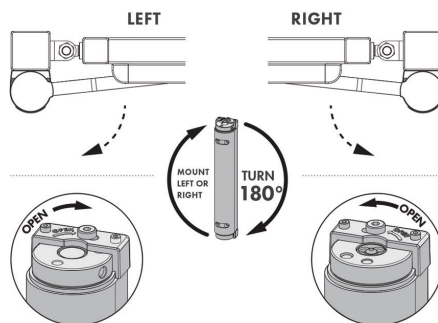
1. ADD DRILLING TEMPLATE



2. INSTALL GATE CLOSER



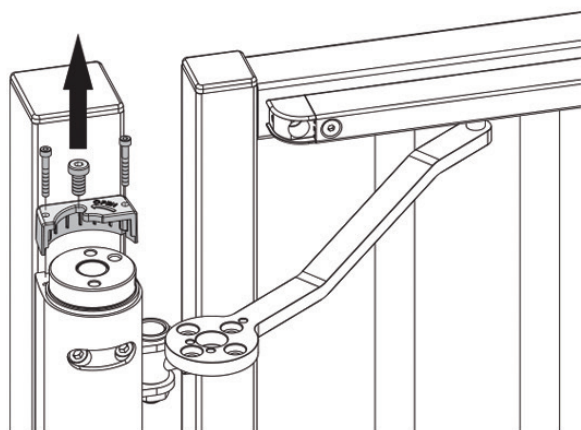
4. LEFT OR RIGHT MOUNTING



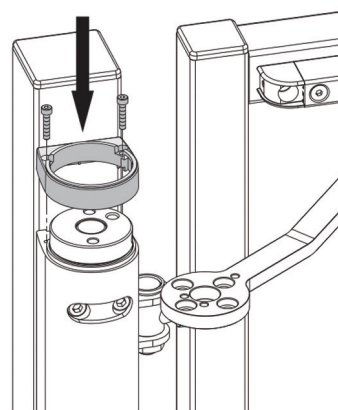
90° & 180° INSTALLATION

5. INSTALLING ARM

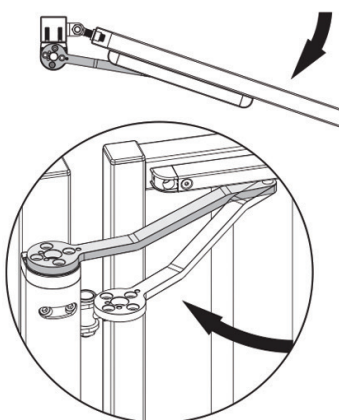
A. Remove tension block



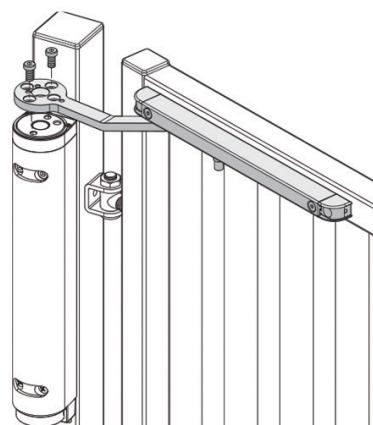
B. Place cap



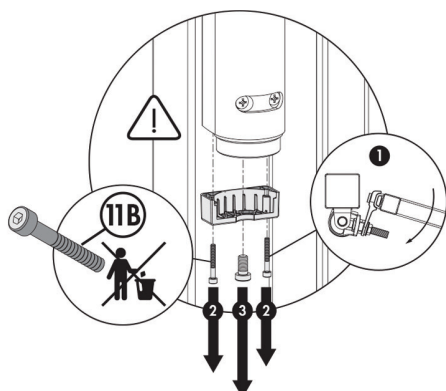
C. Position



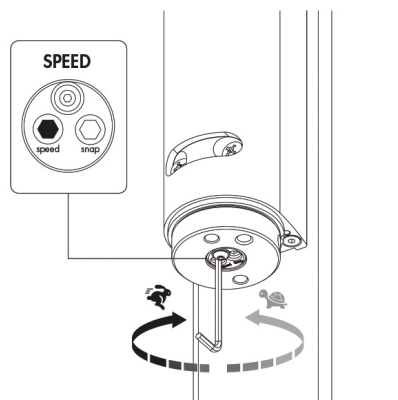
D. Fix



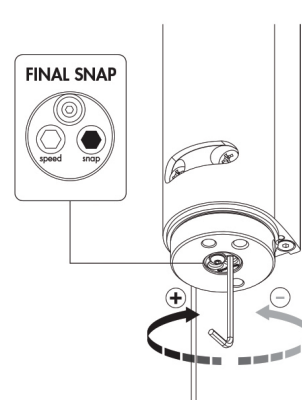
6. REMOVE PRE-TENSION FIXER



7. ADJUST SPEED

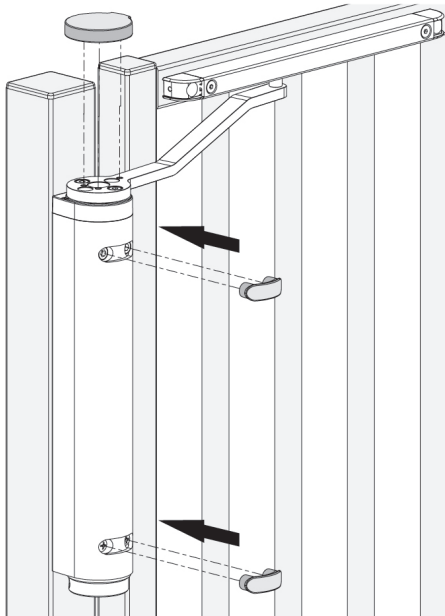


8. ADJUST FINAL SNAP

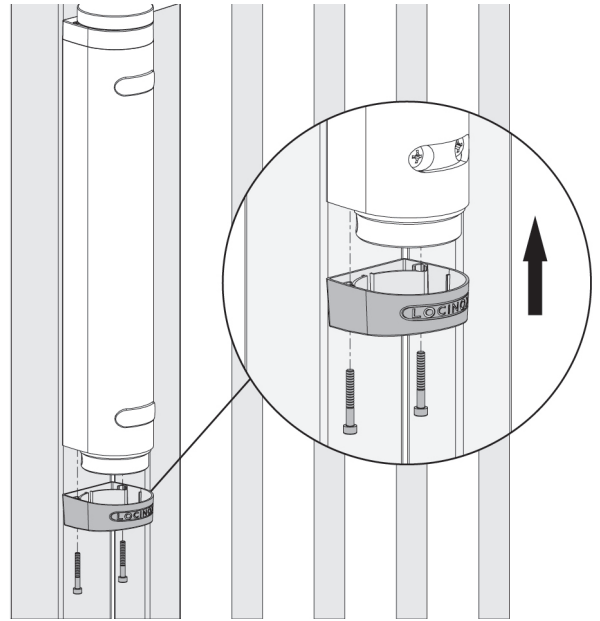


9. FINISH INSTALLATION

A. Add top caps and covers

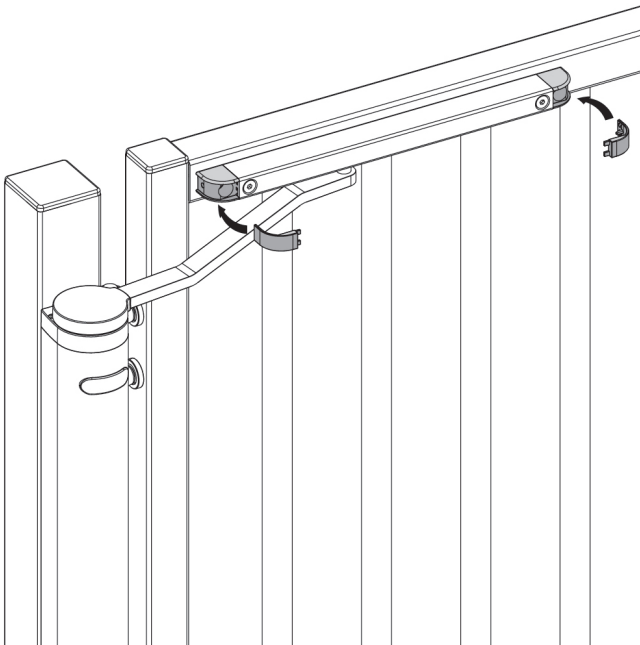


B. Fix bottom cap



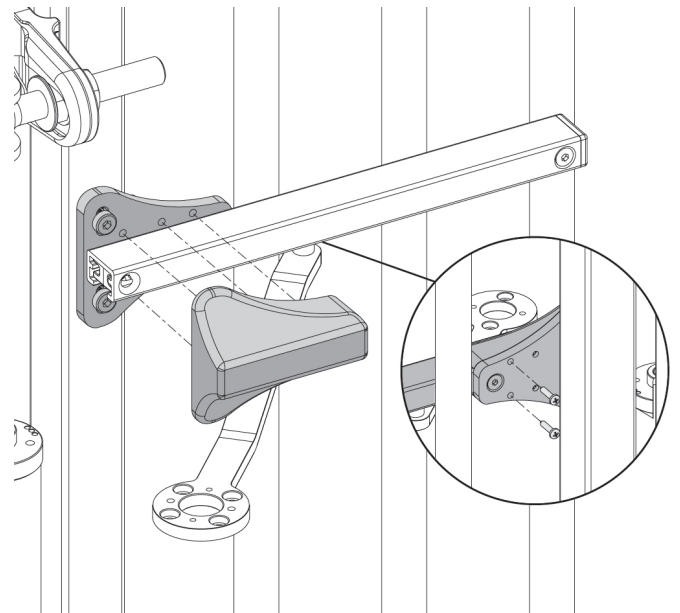
90° INSTALLATION

10. ADD RAIL CAP COVERS



180° INSTALLATION

10. ADD RAIL CAP COVERS



Whilst every effort has been made to ensure the accuracy of the information supplied. F.H.Brundle cannot be held responsible for any errors or omissions. This product must only be employed for its original intended use. Any other use is wrong and potentially dangerous. Installation must be carried out in full compliance with current regulations. F.H.Brundle cannot be held liable for any damages resulting from wrongful, erroneous or negligent use.

Nov 2018