

- 1 pair of hinges suitable for between 300kg (150kg per hinge) and 800kg (400kg per hinge)
- Tested to 500,000 openings with no wear - 50 years at an average of 25 openings a day!
- Low friction, ideal for use with automated gates
- Lifetime guarantee (conditions apply)

## PRODUCT OPTIONS:

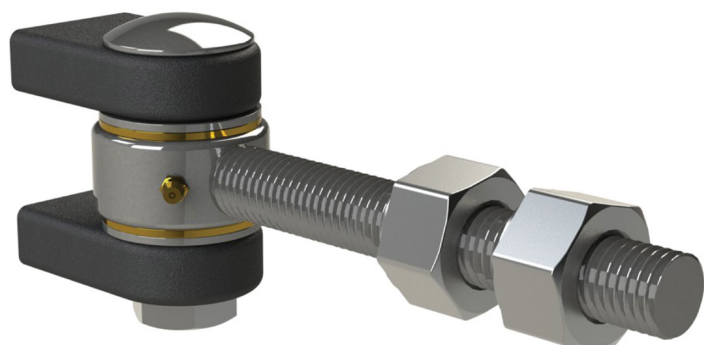
- SH20 - M20 x 150mm - For up to 150kg per hinge
- SH25 - M25 x 150mm - For up to 200kg per hinge
- SH30 - M30 x 200mm - For up to 400kg per hinge

## INSTALLATION:

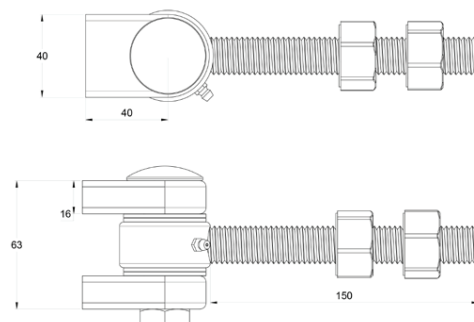
Disassemble the two self colour lugs from the hinge and weld in position to the gate post. Drill a hole through the gate frame to suit the thread size. Once the gate has been galvanised or painted assemble the hinge and use the 2 nuts to adjust the position of the gate.

## MAINTENANCE:

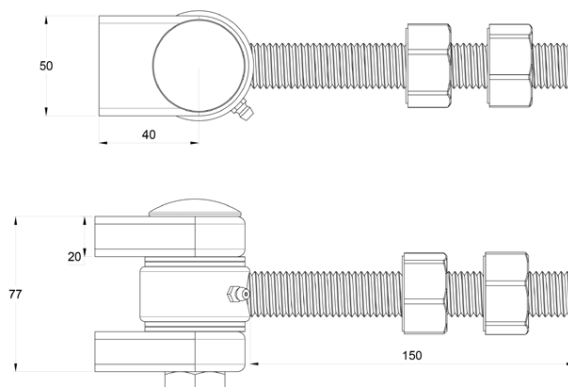
Lubricate during fitting and once every 6 months to ensure maximum product life.



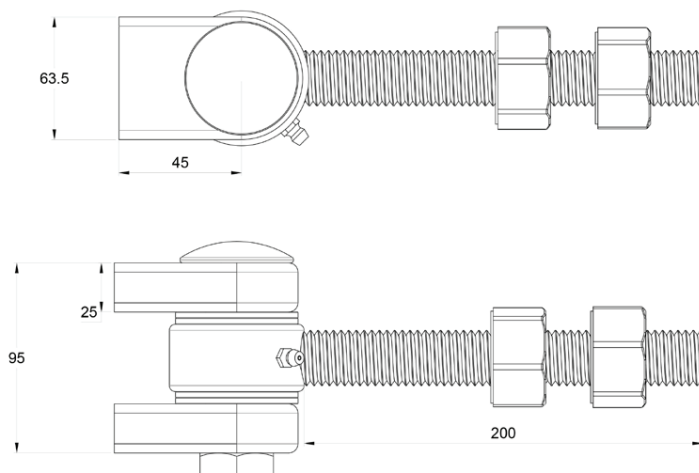
## SUPERHINGE M20



## SUPERHINGE M25



## SUPERHINGE M30



Whilst every effort has been made to ensure the accuracy of the information supplied. F.H.Brundle cannot be held responsible for any errors or omissions. This product must only be employed for its original intended use. Any other use is wrong and potentially dangerous. Installation must be carried out in full compliance with current regulations. F.H.Brundle cannot be held liable for any damages resulting from wrongful, erroneous or negligent use.

**Southampton**

Tel: 023 8070 3333  
Fax: 023 8070 5555

**Rainham**

Tel: 01708 25 35 45  
Fax: 01708 25 35 50

**Ilkeston**

Tel: 0115 930 2070  
Fax: 0115 951 2455

**Birmingham**

Tel: 0121 565 8282  
Fax: 0121 565 8292

**Haydock**

Tel: 01942 86 88 88  
Fax: 01942 86 88 99

**Edinburgh**

Tel: 0131 335 5999  
Fax: 0131 335 5911

**Glasgow**

Tel: 0141 332 3231  
Fax: 0141 332 7325



**F.H.BRUNDLE**  
SERVING THE TRADE SINCE 1889

**www.fhbrundle.co.uk**  
**sales@brundle.com**