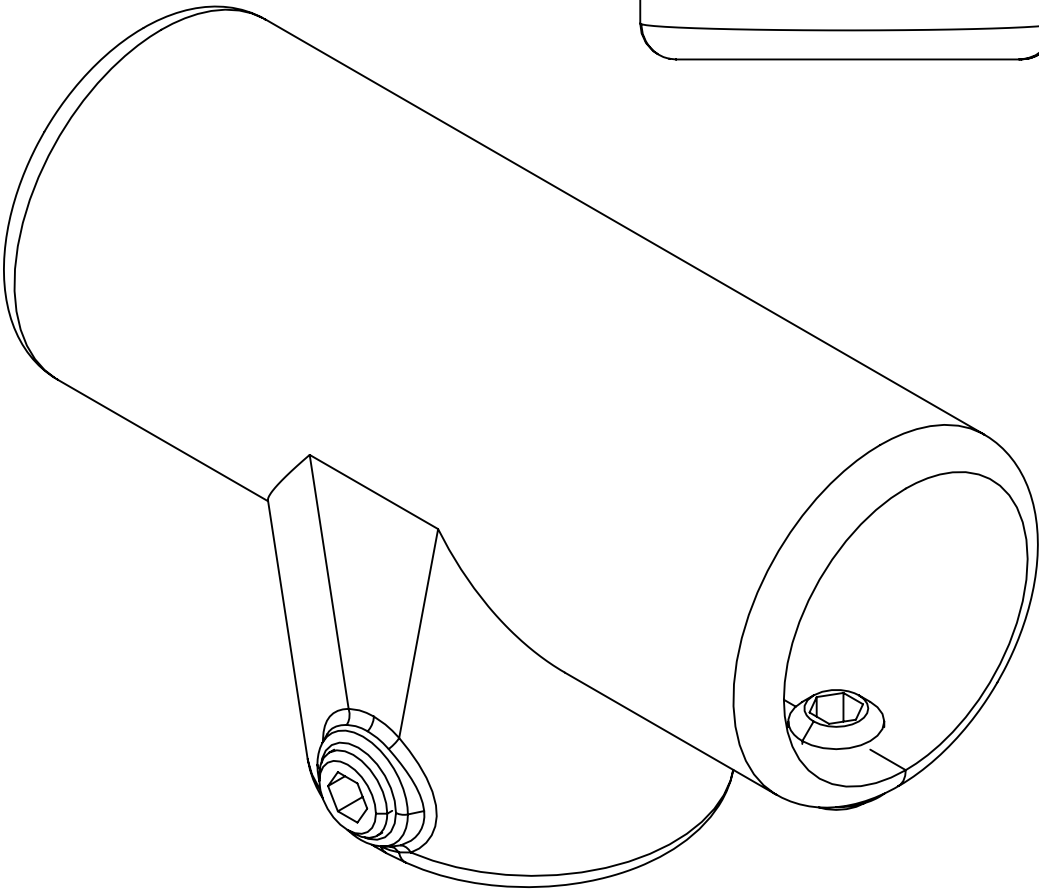
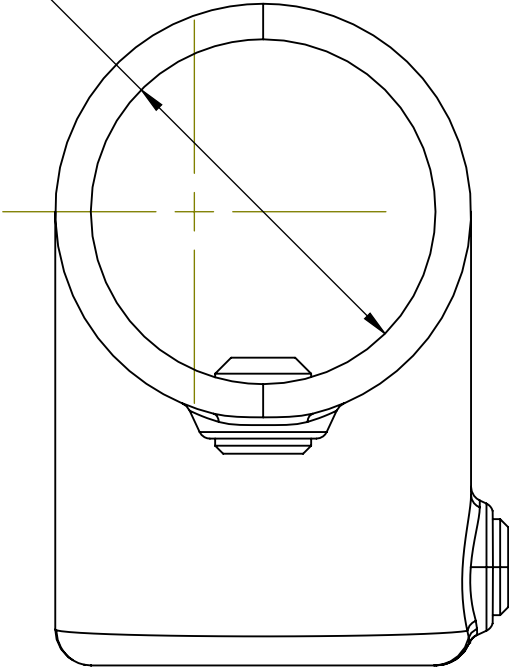


TUBE SIZE ϕ



Typically used on shallow sloping guardrail between 0° and 11° to connect the upright to the top rail. Tubes can be joined inside this fitting. Normally used in conjunction with the 156 fitting.

PART CODE	MATERIAL	TUBE SIZE ϕ	A	B	FINISH
16155C	Malleable Cast Iron	42.4	60mm	144mm	Galvanised
16155D	Malleable Cast Iron	48.3	67mm	158mm	Galvanised

DESCRIPTION: LONG TEE (0°-11°)					
	NAME	DATE	REVISION	UNLESS OTHERWISE SPECIFIED ALL DIMENSIONS ARE IN MILLIMETERS	
DRAWN			A		
CHECKED				DO NOT SCALE DRAWING	SCALE:1:1