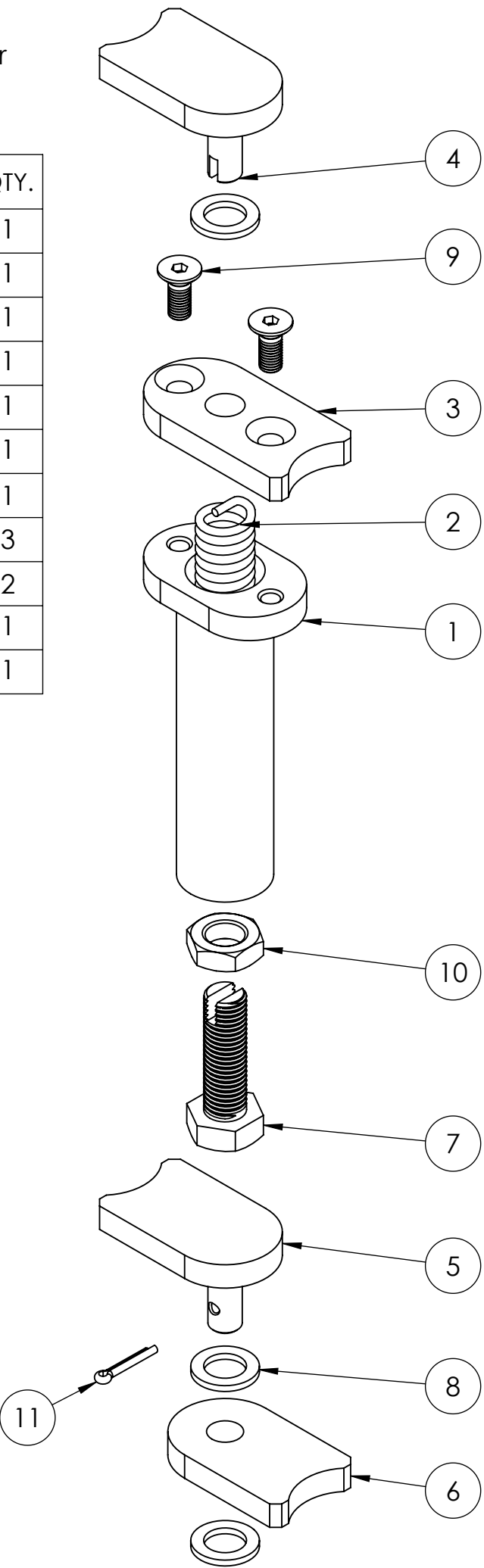


NB: This self closing gate hinge set has lugs that are universal, they can be welded to 42.4mm tube, 48.3mm tube and any bar or box section with a width 40mm or greater.

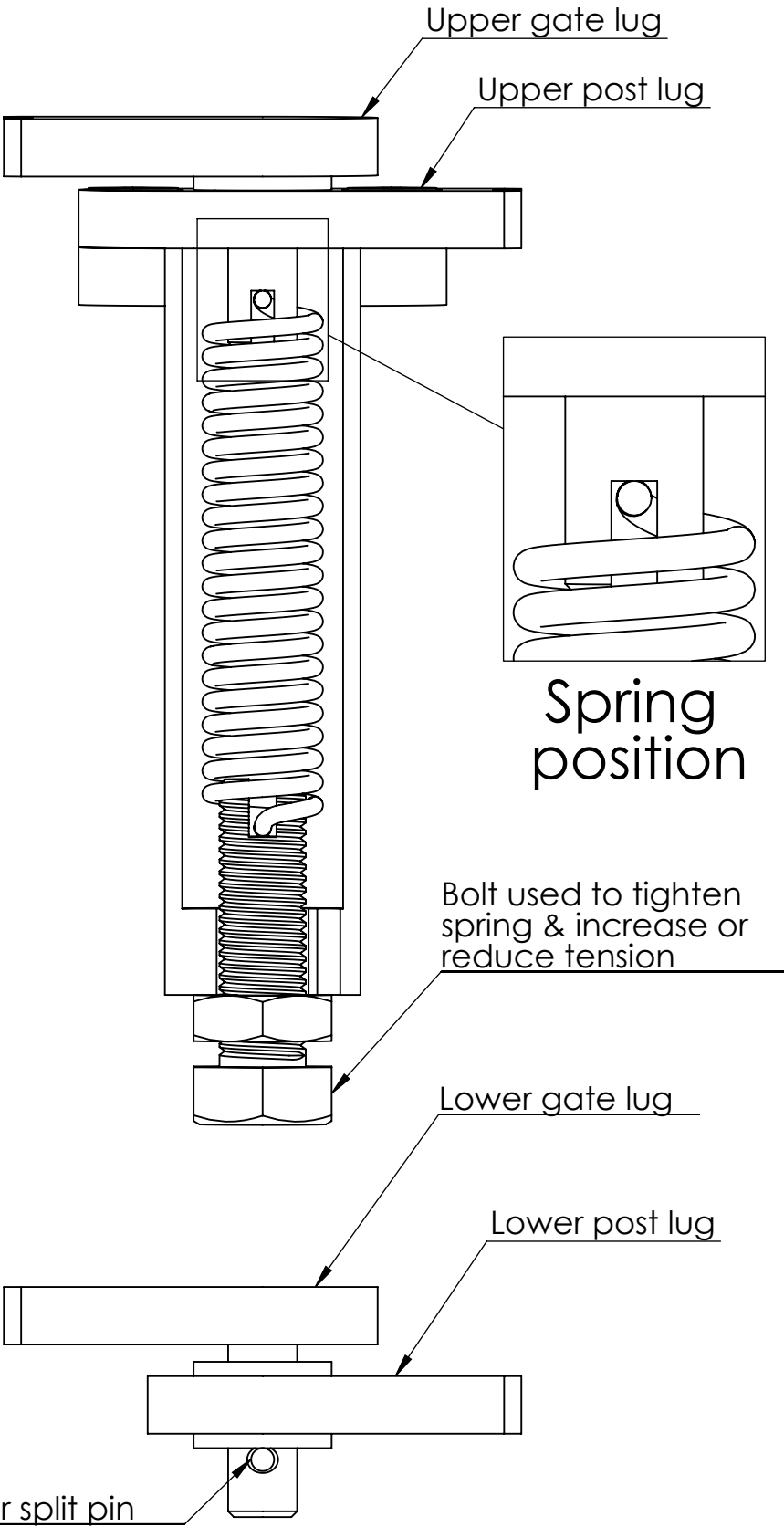
ITEM NO.	GATE HINGE SET CONTENTS	QTY.
1	Housing For Spring	1
2	Compressed Spring	1
3	Lug With Countersunk Holes	1
4	Lug With Slotted Pin	1
5	Lug With Pin & Cotter Hole	1
6	Plate Lug With Hole	1
7	M16 x 50mm Slotted Bolt	1
8	Washer Ø24mm x 2.5mm	3
9	M8 X 20mm Countersuck Bolt	2
10	M16 - Locking Nut For Slotted Bolt	1
11	Split Pin	1



Installation

- 1) Weld lugs 4 & 5 to the gate frame with adequate spacing.
- 2) Weld lugs 3 & 6 to the gate post allowing space for the washers and aligning with the gate Lugs
- 3) Assemble parts 1,2,7 & 11 with the spring position as shown, the slotted bolt should be tightened just over half way in and locked.
- 4) Used the countersunk bolts to secure the assembled spring housing to lug 3
- 5) Lift the gate onto the gate post lugs, add the spit pin into the hole in part 5 to secure.
- 6) To adjust the tension in the spring housing use two 24mm spanners. First release lock nut 11 & then rotate the slotted bolt 7 in the direction you want the gate to close. When the spring closes the gate gently & without undue force, tighten the locking nut.

Tip - Excess thread protruding from the bottom of the fitting can be reduced by ensuring the bolt is in the correct position at stage 3



FH BRUNDLE
Tel: 01708 253545
Email: sales@brundles.com
Web: www.fhbrundle.co.uk



UNLESS OTHERWISE SPECIFIED
ALL DIMENSIONS ARE IN MILLIMETERS

	NAME	DATE	REVISION
DRAWN	GC	09/10/2015	A
REV. BY			

MATERIAL: AISI 316

FINISH: Polished

GRIT SIZE: 320

NOTES: Customer Drawing

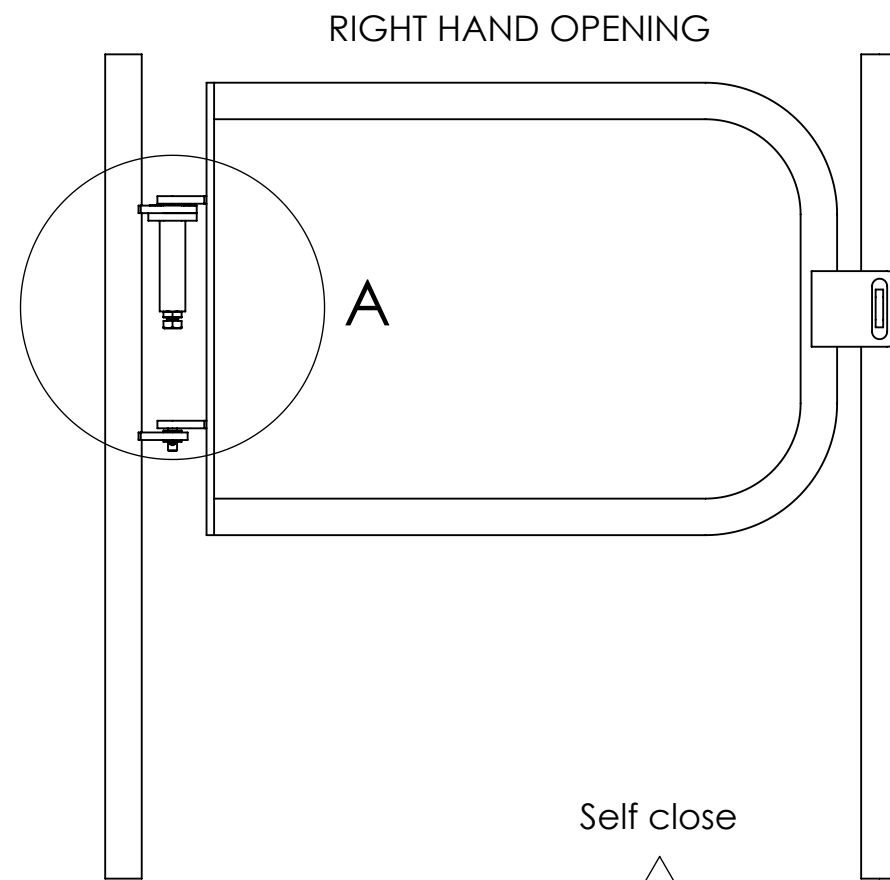
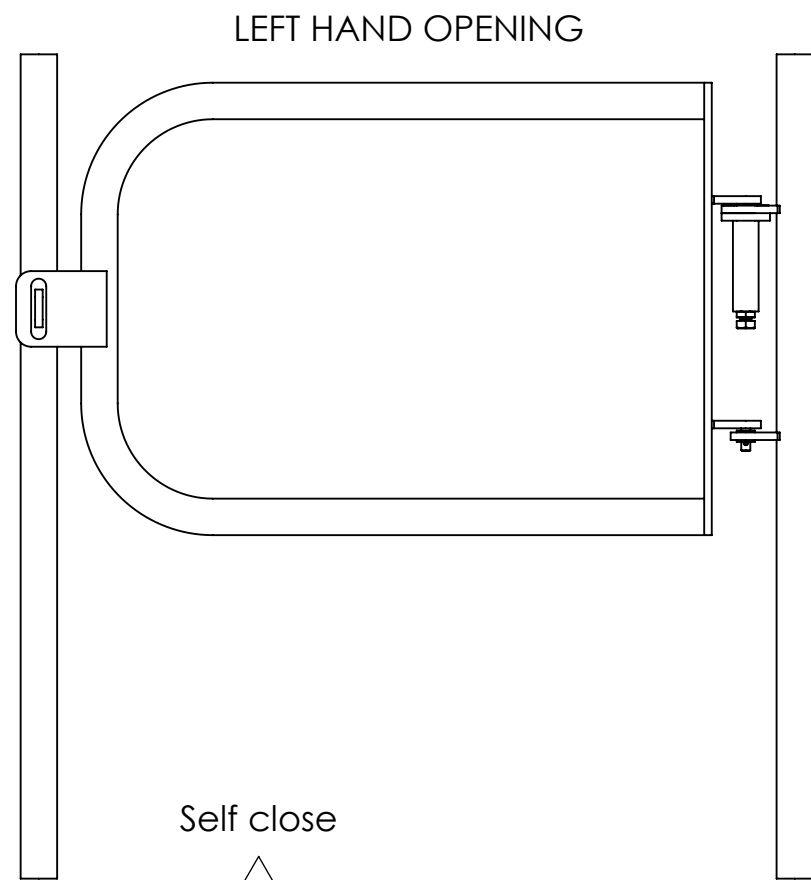
DESCRIPTION: Self Closing Gate Hinge

PART NO: 18SGH

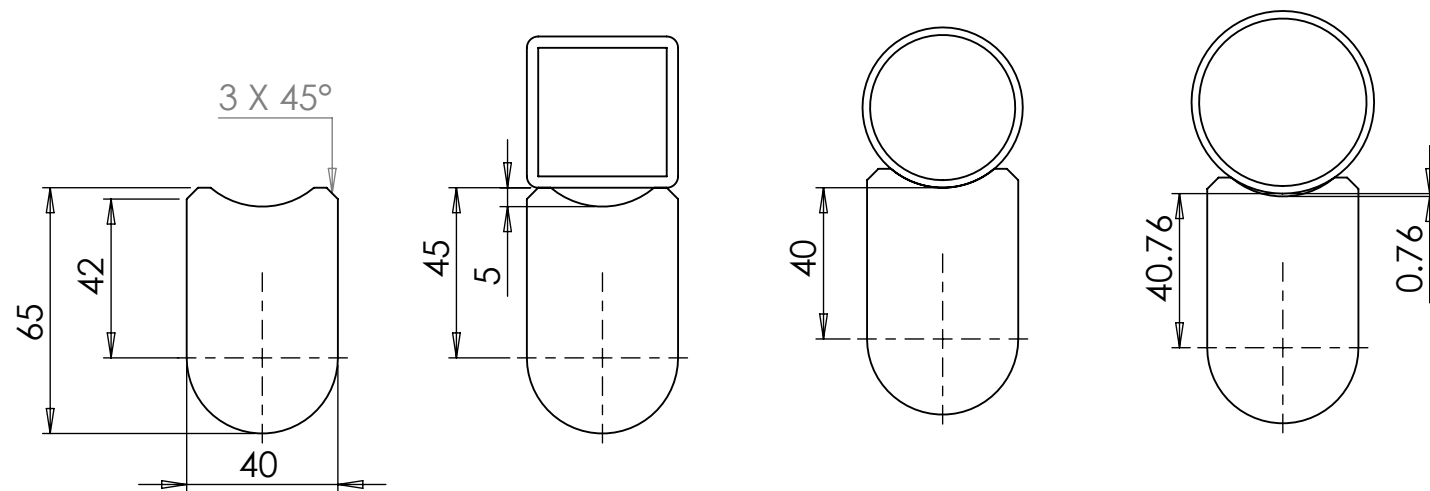
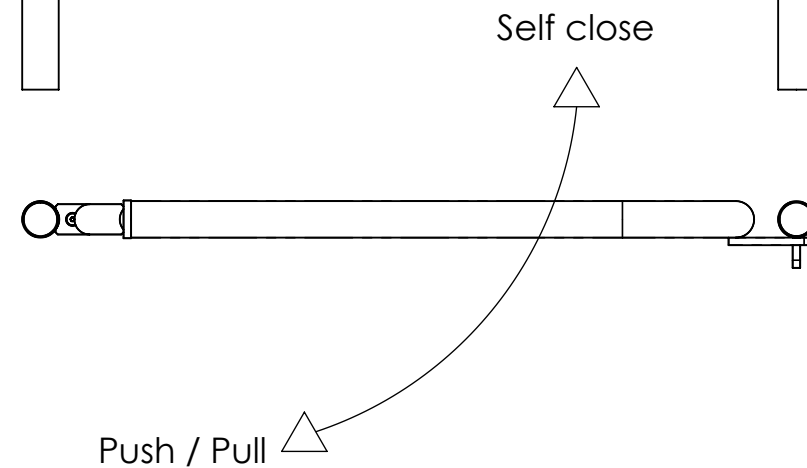
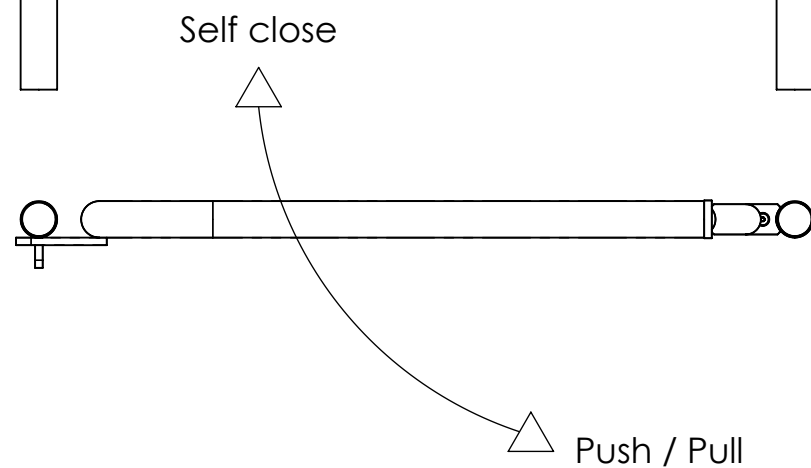
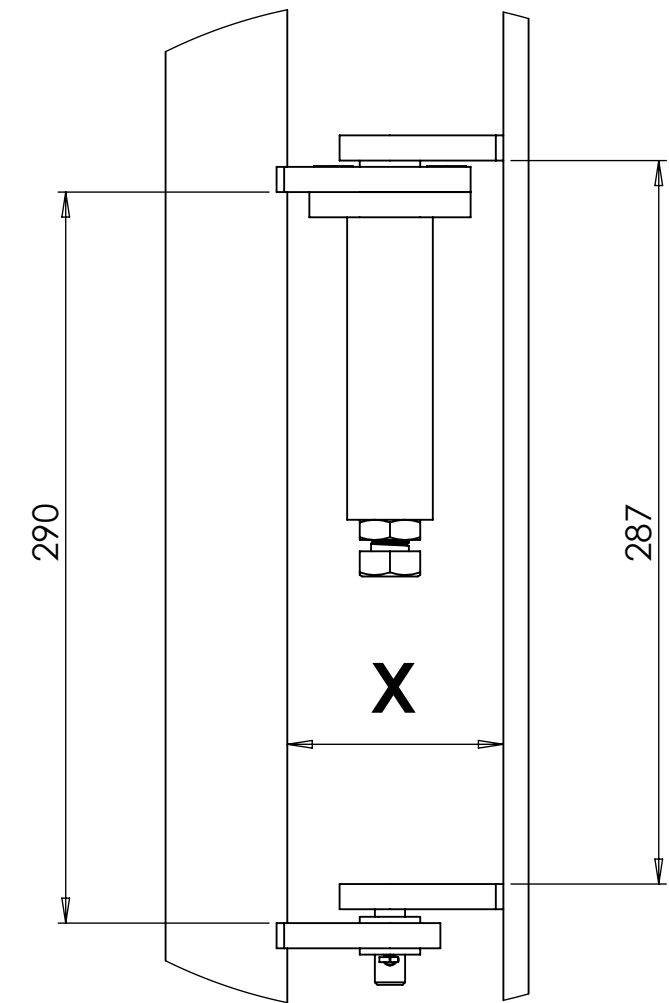
DWG NO: N/A

SCALE:1:5 DO NOT SCALE DRAWING SHEET 1 OF 2

A3



DETAIL A



UNIVERSAL LUG

SHS/FLAT BAR

42.4mm TUBE

48.3mm TUBE

NB: This self closing gate hinge set has lugs that are universal, they can be welded to 42.4mm tube, 48.3mm tube and any bar or box section with a width 40mm or greater.

POST SIZE + SHAPE	FRAME	Measurement - X (mm)
SHS/Flat Bar	SHS/Flat Bar	90
SHS/Flat Bar	42.4 Tube	85
SHS/Flat Bar	48.3 Tube	85.76
42.4 Tube	SHS/Flat Bar	85
42.4 Tube	42.4 Tube	80
42.4 Tube	48.3 Tube	80.76
48.3 Tube	SHS/Flat Bar	85.76
48.3 Tube	42.4 Tube	80.76
48.3 Tube	48.3 Tube	81.52



FH BRUNDLE

Tel: 01708 253545
Email: sales@brundles.com
Web: www.fhbrundle.co.uk

NOTES: Technical Drawing - Drawing Not To Be Supplied To Customer

DESCRIPTION: Safety Gate Hinge

PART NO: 18SGH

DWG NO: N/A

A3

UNLESS OTHERWISE SPECIFIED ALL DIMENSIONS ARE IN MILLIMETERS			
NAME	DATE	REVISION	
DRAWN	GC	09/07/2015	A
REV. BY			

MATERIAL: AISI 316

FINISH: Polished

GRIT SIZE: 320

SCALE: N/A DO NOT SCALE DRAWING SHEET 2 OF 2