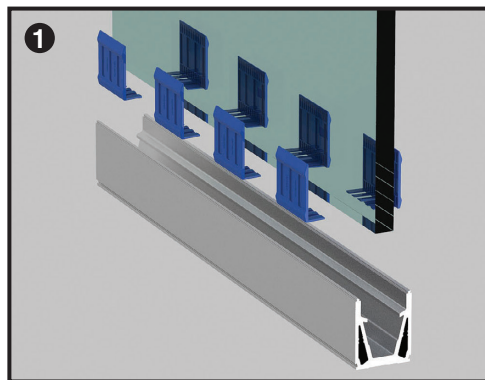
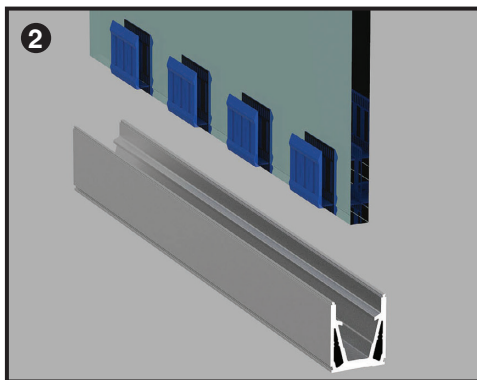


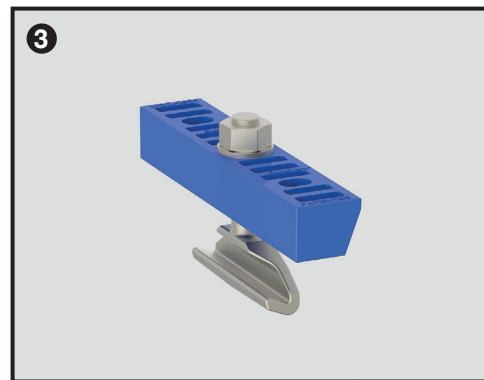
INSTALLATION



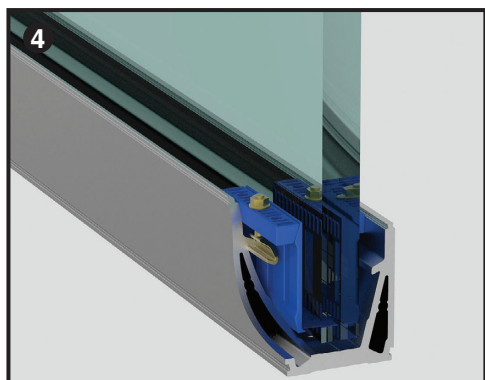
1 Squeeze the glass clamps onto the glass (4 per metre).



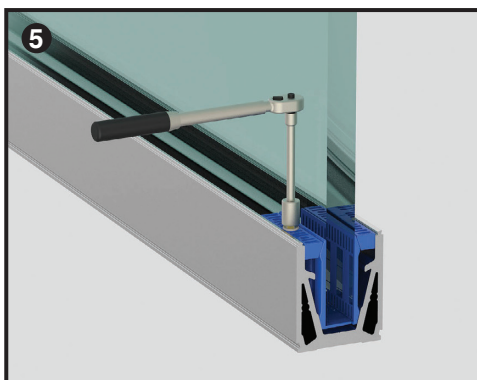
2 Seat the glass within the channel.



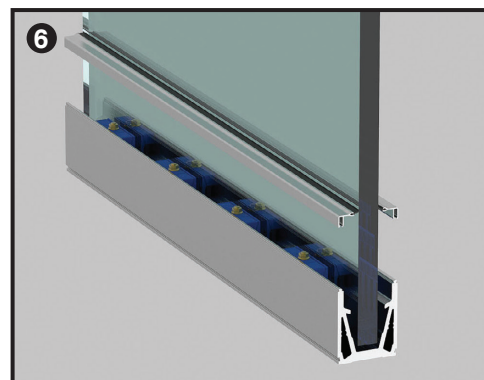
3 Insert the clamp bar through the anchor and loosely tighten the bolt.



4 Slide the clamp bars down and through the channel so they sit in position on the glass clamp.

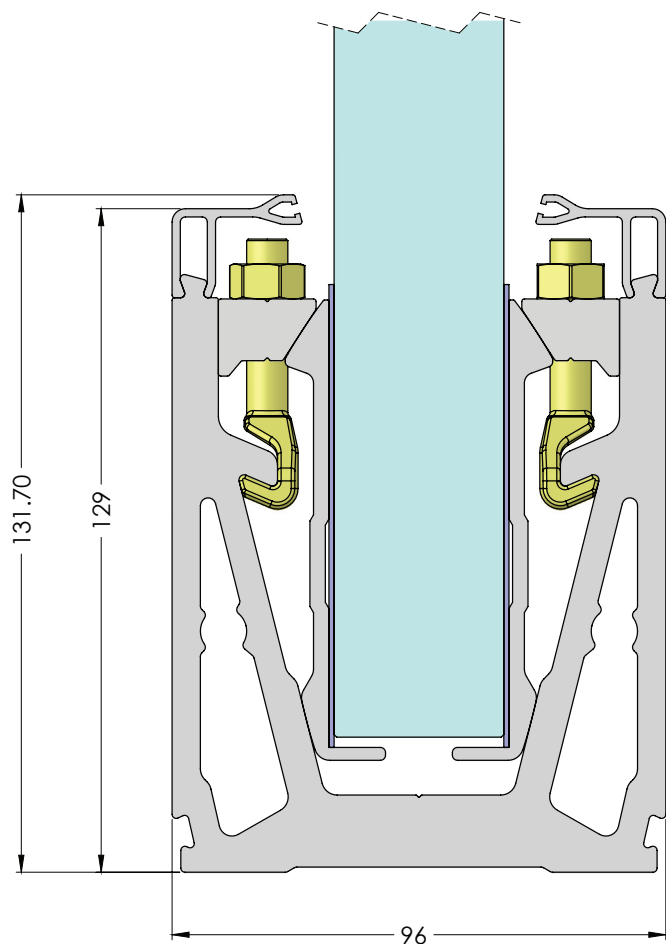


5 Adjust the glass into desired position and tighten the nuts on each side of the system to 15Nm.

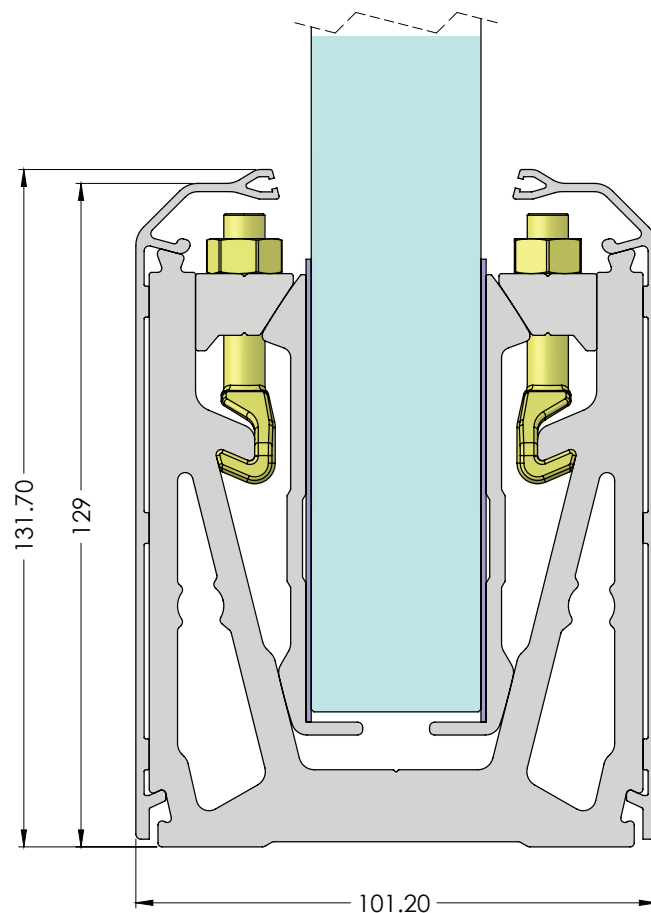


6 Finally, insert the gasket into the top recess of the cladding and firmly press on to the channel.

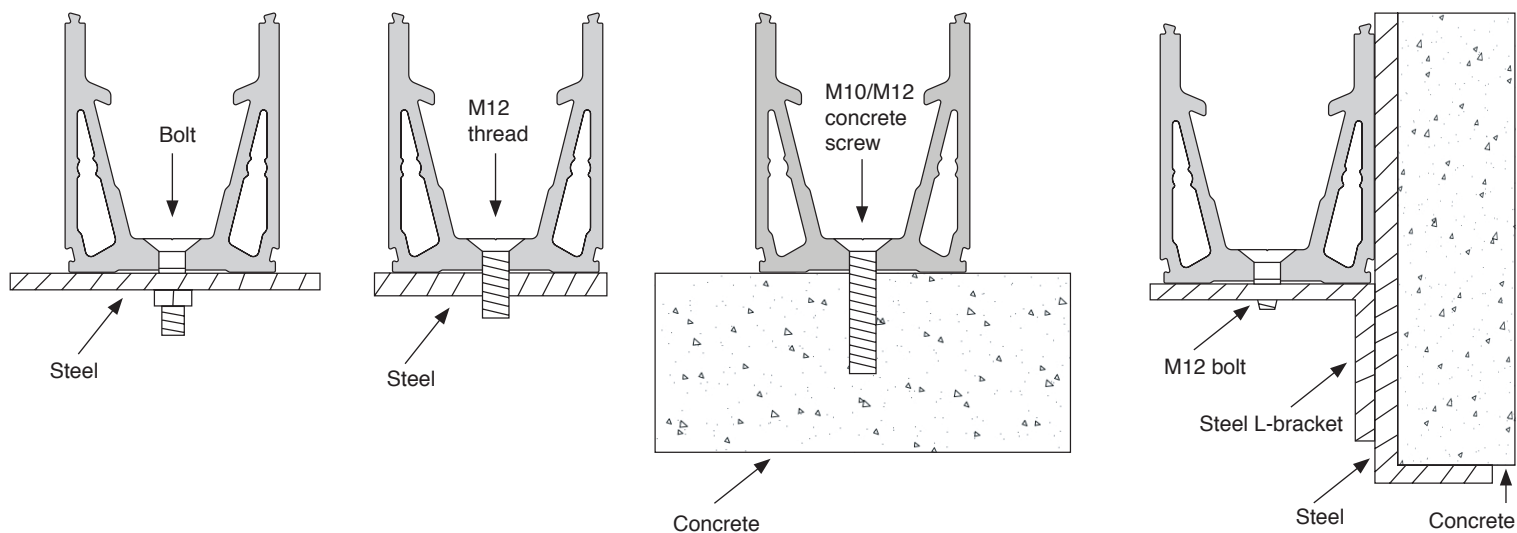
WITH TOP CLADDING



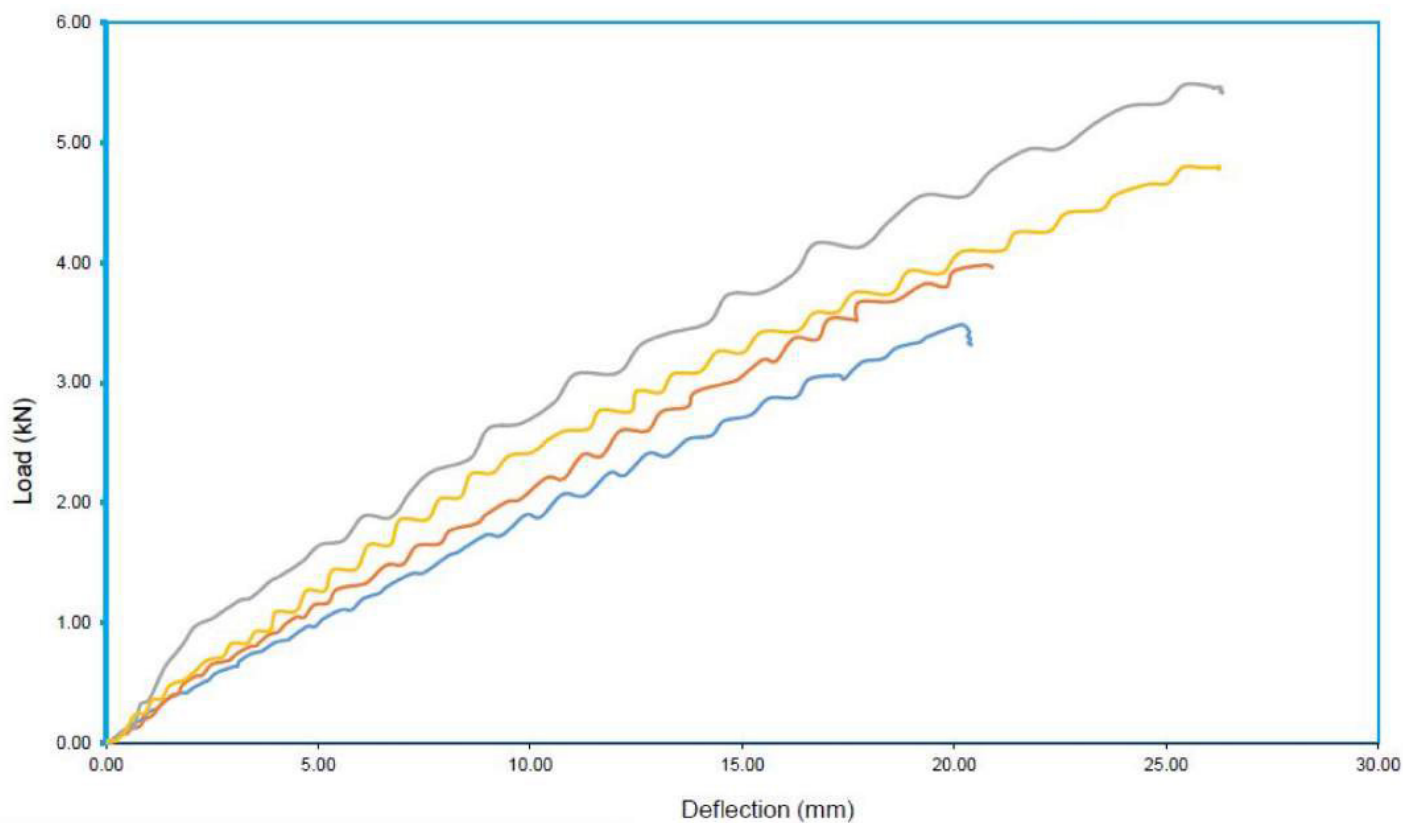
WITH SIDE CLADDING



FITTING SCENARIOS



TEST RESULTS FOR STEEL



Key	
—	31.5mm PVB Glass
—	25mm Toughened Glass
—	33mm PVB Glass
—	25.5mm Sentry Glass

Glass Type	Glass Span mm	Working Line Loads or System kN/m	Test Height mm	Deflection at Working Line Load for System mm
25.0mm Toughened Monolithic	1000	3.0	1100	14.67
25.5mm Toughened Laminated Sentry	1000	3.0	1100	13.21
31.5mm Toughened Laminated PVB	1000	3.0	1100	16.55
33.0mm Toughened Laminated PVB	1000	3.0	1100	11.00

Whilst every effort has been made to ensure the accuracy of the information supplied, F.H.Brundle cannot be held responsible for any errors or omissions. This product must only be employed for its original intended use. Any other use is wrong and potentially dangerous. Installation must be carried out in full compliance with current regulations. F.H.Brundle cannot be held liable for any damages resulting from wrongful, erroneous or negligent use.

Apr 2018