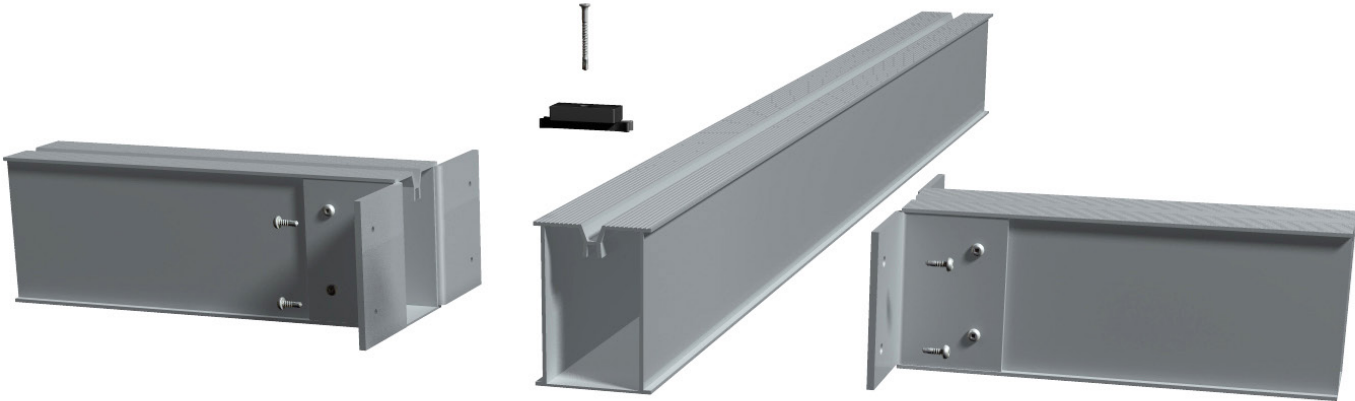


ALUMINIUM DECKING SUBSTRUCTURE

The aluminium substructure system has been designed to support all conventional decking systems.

FEATURES:

- Supports decking boards as low as 32mm & as high as 1070mm
- Simple design
- rapid installation
- Compatible with all RynoDeck™ pedestals & cradles
- Supports any type of conventional decking boards, softwood, hardwood, composite PVC
- Powdercoating & anodising options available



TECHNICAL SPECIFICATION

Material	Aluminium alloy 6063	
Temper	T6	
Finish	Mill/Raw finish or powder coated to RAL 9005 (black)	
Support Height	32 - 1072mm (when used in conjunction with RynoDeck™ pedestals/cradles)	
Allowable Load (Uniformly Distributed)	4.0 kN/m2 (further data available on request)	
Allowable Load (Concentrated)	1.4 kN (further data available on request)	
Allowable Joist Span Between Support Points	38mm profile - 600mm	72mm profile - 1200mm
Joist Screw	4.2 x 13mm stainless steel A2, square drive pan-head & self-drilling	
Decking Screws	3.9 x 19mm stainless steel A2, square drive countersunk head & self-drilling	
	3.9 x 38mm stainless steel A4, chemi-black finish, square drive countersunk head & self-drilling	

Whilst every effort has been made to ensure the accuracy of the information supplied. F.H.Brundle cannot be held responsible for any errors or omissions. This product must only be employed for its original intended use. Any other use is wrong and potentially dangerous. Installation must be carried out in full compliance with current regulations. F.H.Brundle cannot be held liable for any damages resulting from wrongful, erroneous or negligent use.