



Box Bolt®

The Approved Blind Steelwork Fixing



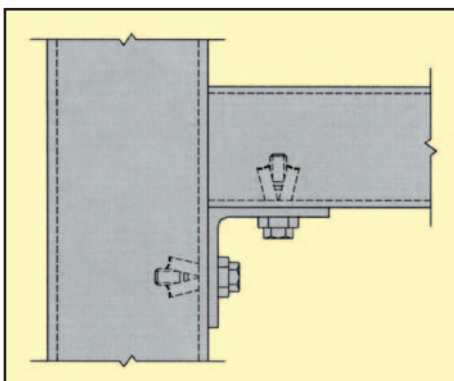
- Zinc Plated, Hot Dip Galvanised and Stainless Steel finishes in stock
- Large overlapping fixing thickness range
- LR type approved
- DIBt approved
- Guaranteed Safe working load
- 5 to 1 Factor of safety

BoxBolt is a fully tested and approved blind fixing solution for connecting to hollow section steelwork or where access is restricted to one side only. **The BoxBolt** fixing is suitable for use with rectangular, square and even circular hollow sections.

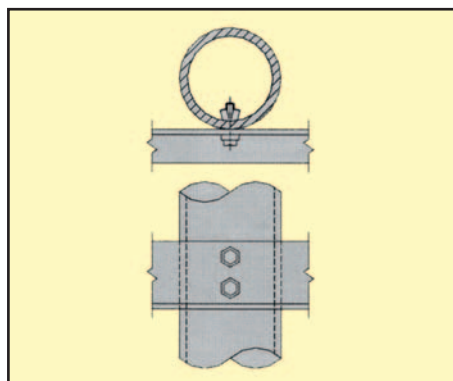
BoxBolt is available in three finishes which are; Zinc Plated for the less aggressive environments, Hot Dip Galvanised for the more aggressive environments and Stainless Steel for the most arduous of applications. These finishes combined with three lengths of **BoxBolt** make it extremely flexible to suit its environment and application.

- Hexagonal head for ease of installation
- Optional BoxSok™ tool for ease of installation
- M06 version available
- Various head styles available to order
- No welded inserts required
- No internal sleeves needed

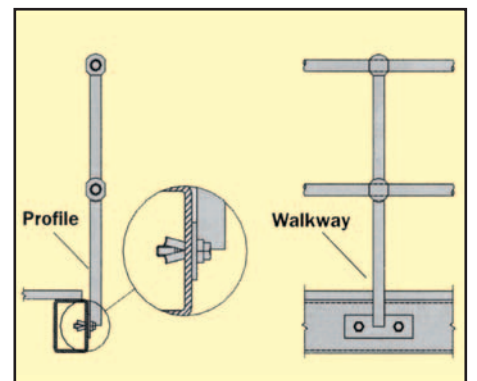
BoxBolt® Application Examples



Structural tube to structural tube connected with an angle bracket.



Angle to Tubular Post the **BoxBolt** is suitable for most profiles of structural tube, including circular sections.



The **BoxBolt** can be used to connect any type of bracket, such as a mounting plate for hand railing as shown



BoxBolt® Technical Data

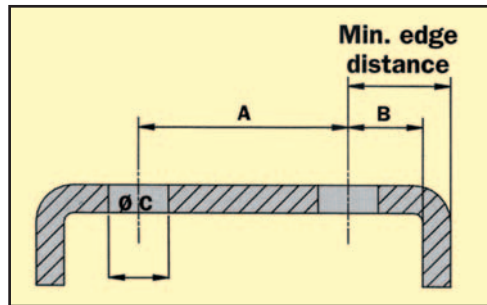


Part Number & description			Dimensional information								Load information				
BoxBolt Size	Product Code	Size	Setscrew length mm	Fixing range dim x		Across Flats of shoulder mm	Shoulder thickness mm	Dim A	Dim B	Hole size Ø c	Bolt dia.	Thickness of material being connected to	Safe Working loads (kn)		Torque (Nm)
				Min	Max								Tensile	Sheer	
M06	10BQ1Z06	1	45	3	29	17	5	30	11	11 +1.0, -0.25	M06	3.0	2.2	5	19
M08	10BQ1_08	1	50	3	26	22	6	35	13	14 +1.0, -0.25	M08	5.0	2.7	7	25
	10BQ2_08	2	70	12	46							6.3 or 8.0	4.5	13	
	10BQ3_08	3	90	24	66							10.0 or 12.5	6		
M10	10BQ1_10	1	50	3	23	24	7	40	15	18 +1.0, -0.25	M10	5.0	4.5	13	45
	10BQ2_10	2	70	15	43							6.3	8.4		
	10BQ3_10	3	90	30	63							10.0 or 12.5	11.5		
M12	10BQ1_12	1	55	3	25	26	8	50	18	20 +1.0, -0.25	M12	5.0	4.5	15	80
	10BQ2_12	2	80	18	50							6.3	7.8		
	10BQ3_12	3	100	36	70							8.0	13.1		
M16	10BQ1_16	1	75	3	35	36	9	55	20	26 +2.0, -0.25	M16	5.0	6.4	35	190
	10BQ2_16	2	100	24	60							6.3	8.2		
	10BQ3_16	3	120	48	80							8.0	13.9		
		10.0	23.7												
M20	10BQ1_20	1	100	3	42	46	11	70	25	33 +2.0, -0.25	M20	6.3	8	40	300
	10BQ2_20	2	120	30	72							8.0	15.3		
	10BQ3_20	3	150	60	102							10.0	28.4		
		12.5	43.7												

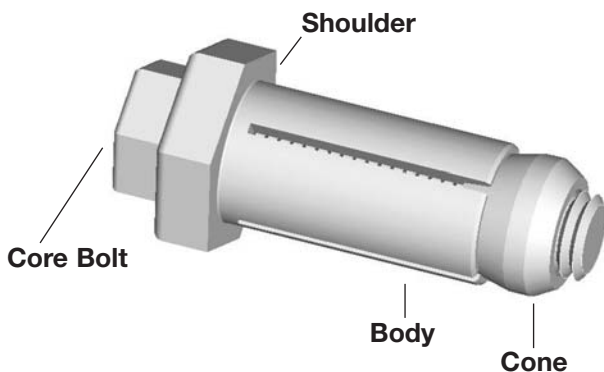
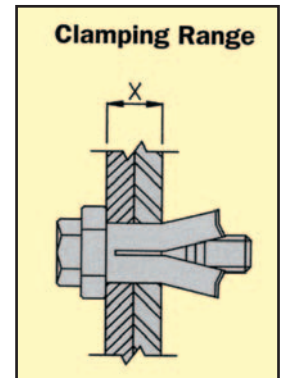
BQ1Z06 is tested at an external test house but is not approved by LR type or DIBt

Select the type of finish you require on the **BoxBolt** by replacing the _ in the code with a **Z** for zinc plated, a **G** for Hot Dip Galvanised or a **S** for Stainless Steel.

Example: **BQ2G12** is a **M12 BoxBolt** size **2** in **Hot Dip Galvanised** Finish.



Note: Min. edge distance = Dim B plus the thickness of hollow section



- Do not exceed the Safe Working Loads (SWL) specified
- All loads include a 5:1 Factor for Safety.
- The tensile load of the BoxBolt is based upon the strength of the structure being connected to. Please consult a licensed structural engineer to establish the load for steel sections other than those shown above.

The **BoxSok installation tool** (*patent applied for*) is a unique installation tool for the **BoxBolt** fixing.

The **BoxSok** eliminates the need for two tools to install the **BoxBolt**; this considerably speeds up the installation process and also reduces the risk of trapping hands between two tools. The **BoxSok** device is available to suit all **BoxBolt** diameters and is driven with a 1/2" square drive.



BoxSok™