






Colour Guide

The colours in the tables will help you select your products material and finish. These will also be displayed in the page footer throughout this section. Products not colour coded will state their material or finish below the table.

| | |
|--|---|
|  | Grade 304 Stainless steel (Internal) |
|  | Grade 316 Stainless steel (External) |
|  | Zamac (Zinc aluminium alloy) |
|  | Zinc coated steel |
|  | Mild steel |
|  | Galvanised steel |
|  | Aluminium |
|  | Duplex 2205 (Ultra marine stainless) |

Icons

Throughout this section there are various icons to help you with your product selection.

| | |
|--|--|
|  | Diameter |
|  | Square Solid |
|  | Square Hollow |
|  | Technical information that can be found on our website |
|  | Scan for more information |

Flooring & Stair Treads





Index

| | | | |
|-----------------------------------|---------|--------------------------------------|---------|
| Aluminium Alloy Tread Plate..... | 397 | Grating Fixing Clips..... | 399 |
| Aluminium Deck System..... | 374-378 | Landing Covers..... | 401 |
| Anti-Slip | | Nosing..... | 400 |
| GRP Strips..... | 400 | Profiles..... | 402-403 |
| Stair Treads..... | 394 | Tread Covers..... | 401 |
| Steel Planking..... | 393-394 | Industrial Grating Flooring..... | 392 |
| Ball Proof Grating | | Industrial Grating Stair Treads..... | 392 |
| & Fixing Clip..... | 386-388 | Make Your Own Stair Treads & | 398 |
| Cast Iron Treads & Plates..... | 391 | Nosing..... | |
| Chequer Plate..... | 397 | Open Steel | |
| Composite Decking..... | 361-366 | Flooring..... | 386-389 |
| Decking..... | 360-382 | Stair Treads..... | 387-389 |
| Decking Substructure..... | 368-376 | Universal Fixing Clip..... | 386 |
| Durbar Flooring..... | 396 | Rhino Flooring..... | 393-394 |
| Durbar Stair Treads & Plates..... | 397 | Rinato™ WPC Decking..... | 361-366 |
| Expanded Metal Flooring..... | 398 | Synergised™ Aluminium | 374-378 |
| Gabions..... | 330 | Decking..... | |
| GRP | | Synergised™ Porcelain | 379-381 |
| Decking Plank..... | 400 | Tiles..... | |
| Fixings..... | 403 | WPC Decking..... | 361-366 |
| Flat Sheet..... | 401 | | |
| Grating & Stair Treads..... | 399 | | |

Flooring & Stair Treads
website section



Open Steel Flooring

Standard panels - 1 x 1m & 6 x 1m



Steel

Wrought Iron Components

Gate Hardware

Sliding Door Gear

Gate Automation

Mesh

Decking & Subframe

Flooring & Stair Treads

Handrailing

Fencing

Fixings



The rectangular bearer bars run the length of the panel. Panels can be cut and shaped to your exact requirements. We can supply matching stair treads.

Type W100 & N100

To be used where there is no risk of personnel passing below the working platform or walkway. Typically used on ground level shallow trenches, above water channels in treatment works or placed on solid floors to elevate walking areas from contaminants

Ball Proof



New Ball Proof Compliant Flooring

British standards specify that the maximum permissible opening in open mesh grating can be defined in three categories.

- 20mm ball proof
- 35mm ball proof

We would urge you to assess the following top six design considerations before choosing your open mesh flooring:

- Ball proof requirement
- Loads and deflection
- Bar dimensions
- Slip resistance (plain or serrated)
- Finish (self colour or galvanised)
- Size (standard panel 6 x 1m or fabricated to a specific size)

The following pages show the various available mesh grating to choose from.

Universal Fixing Clip



| Screw Ø mm | Grating Width mm | | Grating Depth Maximum mm | Code |
|---------------|------------------|-----|-----------------------------|---------|
| | Min | Max | | |
| 8 | 30 | 41 | 50 | 2400600 |

The grating clip is the most common style of clip used for fixing down open steel flooring in the UK. The hot dipped galvanised component provides a quick and cost effective method of fixing.



35mm Ball Proof Grating - The compliant alternative to W100

To be used where the working platform or walkway is above a place where people pass through occasionally, the maximum openings shall not permit the passage of a 35mm diameter sphere. Typically used on maintenance access, industrial plants, un-manned substation modules, data centres, where site access is limited and occasional.

Type 100 - Mesh Size 37/125

37mm centre bearer bars and 100mm centres



| Bar mm | Mild Steel Code | Galvanised Code |
|--------|-----------------|-----------------|
| 25 x 3 | 240135BP253 | 240235BP253 |
| 30 x 3 | 240135BP303 | 240235BP303 |
| 35 x 3 | - | 240235BP353 |
| 40 x 3 | - | 240235BP403 |

For Universal Fixing Clip use code: 2400600.

Type 100 - Mesh Size 38/125

38mm centre bearer bars and 100mm centres



| Bar mm | Mild Steel Code | Galvanised Code |
|--------|-----------------|-----------------|
| 25 x 5 | 240135BP255 | 240235BP255 |
| 30 x 5 | 240135BP305 | 240235BP305 |
| 35 x 5 | - | 240235BP355 |
| 40 x 5 | 240135BP405 | 240235BP405 |

For Universal Fixing Clip use code: 2400600.

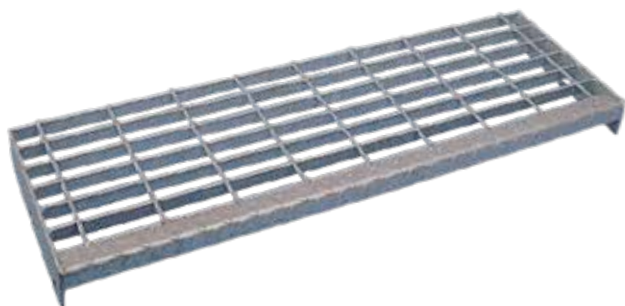
Load Table - 3mm (mesh size 37/125)

| Bearing Bar mm | Loading Category | Max Clear Span 4mm Deflection | Deflection mm | Max Clear Span L/200 or 10mm Max Deflection | Deflection mm | Self Colour Weights Per Square Metre kg | Binding Bar Weights Based on 2 x 1m kg |
|----------------|------------------|-------------------------------|---------------|---|---------------|---|--|
| 25 x 3 | 5kN/m2 | 875 | 3.99 | 930 | 4.61 | 18.74 | 1.18 |
| | 7.5kN/m2 | 875 | 3.99 | 930 | 4.61 | | |
| 30 x 3 | 5kN/m2 | 1060 | 4.00 | 1170 | 5.05 | 22.03 | 1.41 |
| | 7.5kN/m2 | 1060 | 4.00 | 1170 | 5.82 | | |
| 35 x 3 | 5kN/m2 | 1240 | 3.96 | 1420 | 5.43 | 25.33 | 1.65 |
| | 7.5kN/m2 | 1195 | 3.97 | 1365 | 6.77 | | |
| 40 x 3 | 5kN/m2 | 1430 | 3.98 | 1700 | 7.35 | 28.63 | 1.88 |
| | 7.5kN/m2 | 1320 | 3.95 | 1565 | 7.79 | | |

Load Table - 5mm (mesh size 38/125)

| Bearing Bar mm | Loading Category | Max Clear Span 4mm Deflection | Deflection mm | Max Clear Span L/200 or 10mm Max Deflection | Deflection mm | Self Colour Weights Per Square Metre kg | Binding Bar Weights Based on 2 x 1m kg |
|----------------|------------------|-------------------------------|---------------|---|---------------|---|--|
| 25 x 5 | 5kN/m2 | 1145 | 3.99 | 1310 | 6.51 | 28.74 | 1.96 |
| | 7.5kN/m2 | 1050 | 3.96 | 1150 | 5.70 | | |
| 30 x 5 | 5kN/m2 | 1330 | 4.00 | 1575 | 7.86 | 34.04 | 2.36 |
| | 7.5kN/m2 | 1205 | 3.96 | 1385 | 6.91 | | |
| 35 x 5 | 5kN/m2 | 1490 | 3.97 | 1835 | 9.13 | 39.34 | 2.75 |
| | 7.5kN/m2 | 1355 | 3.98 | 1615 | 8.03 | | |
| 40 x 5 | 5kN/m2 | 1645 | 3.97 | 2070 | 9.96 | 44.64 | 3.14 |
| | 7.5kN/m2 | 1495 | 3.95 | 1845 | 9.18 | | |
| 50 x 5 | 5kN/m2 | 1940 | 3.98 | 2440 | 9.95 | 55.24 | 3.93 |
| | 7.5kN/m2 | 1765 | 3.96 | 2225 | 9.99 | | |
| 60 x 5 | 5kN/m2 | 2200 | 4.00 | 2790 | 9.98 | 65.84 | 4.71 |
| | 7.5kN/m2 | 2020 | 3.96 | 2545 | 9.98 | | |

Stair Treads To Suit 35mm Ball Proof Grating



| W x D mm | Mild Steel Code | Galvanised Code |
|------------|-----------------|-----------------|
| 1000 x 283 | 441135BP00* | - |
| 800 x 250 | 441135BP08250 | 441235BP08250 |
| 800 x 288 | 441135BP08288 | 441235BP08288 |
| 900 x 250 | 441135BP09250 | 441235BP09250 |
| 900 x 288 | 441135BP09288 | 441235BP09288 |
| 1000 x 250 | 441135BP10250 | 441235BP10250 |
| 1000 x 288 | 441135BP10288 | 441235BP10288 |
| 1200 x 288 | 441135BP12288 | 441235BP12288 |

Bar size: 25 x 5mm. *Cut to your own size.

Open Steel Flooring

Standard panels - 6 x 1m



20mm Ball Proof Grating

To be used where the working platform or walkway is above a place where people are working (as opposed to people passing under it occasionally). The maximum openings shall not permit the passage of a 20mm diameter sphere. Typically used on walkways above machinery and permanent working areas, where the risk to personnel from large objects, falling from above, is critical.

Type 100 - Mesh Size 21.5/100

21.5mm centre bearer bars and 100mm centres



| Bar mm | Mild Steel Code | Galvanised Code |
|--------|-----------------|-----------------|
| 25 x 3 | 240120BP253 | 240220BP253 |
| 30 x 3 | - | 240220BP303 |
| 35 x 3 | - | 240220BP353 |

Type 100 - Mesh Size 23.5/100

23.5mm centre bearer bars and 100mm centres



| Bar mm | Mild Steel Code | Galvanised Code |
|--------|-----------------|-----------------|
| 25 x 5 | 240120BP255 | 240220BP255 |
| 30 x 5 | 240120BP305 | 240220BP305 |
| 35 x 5 | - | 240220BP355 |
| 40 x 5 | - | 240220BP405 |

Load Table - 3mm (mesh size 21.5/100)

| Bearing Bar mm | Loading Category | Max Clear Span 4mm Deflection | Deflection mm | Max Clear Span L/200 or 10mm Max Deflection | Deflection mm | Self Colour Weights Per Square Metre kg | Binding Bar Weights Based on 2 x 1m kg |
|----------------|------------------|-------------------------------|---------------|---|---------------|---|--|
| 25 x 3 | 5kN/m2 | 1075 | 3.98 | 1300 | 6.16 | 30.49 | 1.18 |
| | 7.5kN/m2 | 1055 | 3.99 | 1155 | 5.73 | | |
| 30 x 3 | 5kN/m2 | 1305 | 4.00 | 1580 | 7.90 | 36.03 | 1.41 |
| | 7.5kN/m2 | 1210 | 3.98 | 1390 | 6.90 | | |
| 35 x 3 | 5kN/m2 | 1535 | 3.99 | 1840 | 9.17 | 41.56 | 1.65 |
| | 7.5kN/m2 | 1355 | 3.94 | 1620 | 8.05 | | |
| 40 x 3 | 5kN/m2 | 1655 | 4.00 | 2080 | 9.98 | 47.09 | 1.88 |
| | 7.5kN/m2 | 1505 | 4.00 | 1855 | 9.23 | | |

Load Table - 5mm (mesh size 23.5/100)

| Bearing Bar mm | Loading Category | Max Clear Span 4mm Deflection | Deflection mm | Max Clear Span L/200 or 10mm Max Deflection | Deflection mm | Self Colour Weights Per Square Metre kg | Binding Bar Weights Based on 2 x 1m kg |
|----------------|------------------|-------------------------------|---------------|---|---------------|---|--|
| 25 x 5 | 5kN/m2 | 1290 | 3.90 | 1525 | 7.62 | 45.01 | 1.96 |
| | 7.5kN/m2 | 1180 | 3.98 | 1340 | 6.63 | | |
| 30 x 5 | 5kN/m2 | 1485 | 3.98 | 1825 | 9.09 | 53.45 | 2.36 |
| | 7.5kN/m2 | 1350 | 3.95 | 1610 | 8.00 | | |
| 35 x 5 | 5kN/m2 | 1665 | 4.00 | 2090 | 9.91 | 61.89 | 2.75 |
| | 7.5kN/m2 | 1515 | 3.96 | 1880 | 9.39 | | |
| 40 x 5 | 5kN/m2 | 1830 | 3.94 | 2305 | 9.92 | 70.33 | 3.14 |
| | 7.5kN/m2 | 1675 | 3.98 | 2105 | 9.94 | | |
| 50 x 5 | 5kN/m2 | 2160 | 4.00 | 2715 | 9.98 | 87.21 | 3.93 |
| | 7.5kN/m2 | 1975 | 3.99 | 2485 | 9.99 | | |
| 60 x 5 | 5kN/m2 | 2460 | 3.98 | 3095 | 9.98 | 104.09 | 4.71 |
| | 7.5kN/m2 | 2255 | 3.98 | 2835 | 9.95 | | |

Fixing Clip For 20mm Ball Proof Grating



A Type 5-20BP assembly is made up of three major components which are a unique Type 5 bottom, an M8 bolt assembly and a narrow top clip, specifically manufactured to result in a simpler installation process for our 20mm ball proof (20BP) grating.



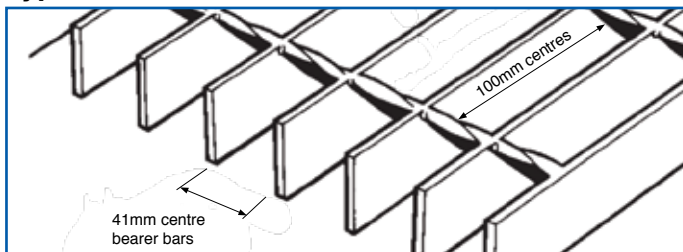
| Screw Ø mm | Grating Width mm | | Grating Depth Maximum mm | Code |
|------------|------------------|-----|--------------------------|---------|
| | Min | Max | | |
| 8 | 21 | 23 | 45 | 2400620 |



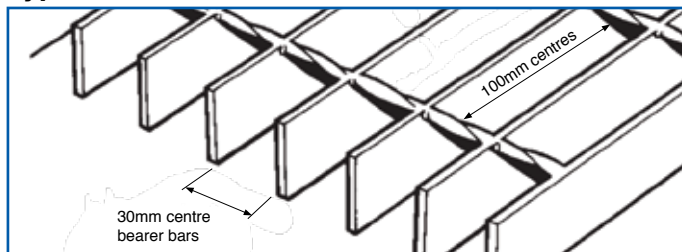
Open Steel Flooring

Standard panels - 1 x 1m & 6 x 1m

Type W100 - 41/100



Type N100 - 30/100



Load Bearing Bars At 41mm Pitch - W100 (41 x 100mm mesh)

| Duty | kN/m2 | 20 x 3 | 20 x 5 | 25 x 3 | 25 x 5 | 30 x 3 | 30 x 5 | 35 x 3 | 35 x 5 | 40 x 3 | 40 x 5 | 45 x 5 | 50 x 5 | 55 x 5 | 60 x 5 |
|---------|-------|--------|--------|--------|--------|--------|--------|--------|--------|--------|--------|--------|--------|--------|--------|
| Light | 3.0 | 1104 | 1308 | 1379 | 1636 | 1655 | 1952 | 1931 | 2214 | 2155 | 2446 | 2673 | 2892 | 3108 | 3317 |
| General | 5.0 | 935 | 1103 | 1164 | 1379 | 1396 | 1655 | 1629 | 1931 | 1861 | 2154 | 2353 | 2546 | 2735 | 2919 |
| Heavy | 7.5 | 815 | 964 | 1017 | 1204 | 1220 | 1446 | 1423 | 1687 | 1626 | 1928 | 2126 | 2301 | 2471 | 2638 |

Load Bearing Bars At 30mm Pitch - N100 (30 x 100mm mesh)

| Duty | kN/m2 | 20 x 3 | 20 x 5 | 25 x 3 | 25 x 5 | 30 x 3 | 30 x 5 | 35 x 3 | 35 x 5 | 40 x 3 | 40 x 5 | 45 x 5 | 50 x 5 | 55 x 5 | 60 x 5 |
|---------|-------|--------|--------|--------|--------|--------|--------|--------|--------|--------|--------|--------|--------|--------|--------|
| Light | 3.0 | 1223 | 1449 | 1528 | 1802 | 1834 | 2110 | 2104 | 2391 | 2326 | 2643 | 2887 | 3124 | 3355 | 3581 |
| General | 5.0 | 1031 | 1223 | 1289 | 1529 | 1547 | 1834 | 1805 | 2104 | 2047 | 2326 | 2541 | 2750 | 2953 | 3152 |
| Heavy | 7.5 | 901 | 1068 | 1126 | 1335 | 1351 | 1602 | 1577 | 1869 | 1802 | 2103 | 2295 | 2485 | 2668 | 2849 |

Type W100 - 41/100

| Bar mm | Panel m | Mild Steel Code | Galvanised Code |
|--------|---------|-----------------|-----------------|
| 25 x 3 | 6 x 1 | 2401W100253 | 2402W100253 |
| 25 x 3 | 1 x 1 | 2401W10025311 | 2402W10025311 |
| 25 x 5 | 6 x 1 | 2401W100255 | 2402W100255 |
| 25 x 5 | 1 x 1 | 2401W10025511 | 2402W10025511 |
| 30 x 3 | 6 x 1 | 2401W100303 | 2402W100303 |
| 30 x 5 | 6 x 1 | 2401W100305 | 2402W100305 |
| 35 x 3 | 6 x 1 | 2401W100353 | - |
| 35 x 5 | 6 x 1 | 2401W100355 | 2402W100355 |
| 40 x 3 | 6 x 1 | 2401W100403 | 2402W100403 |
| 40 x 5 | 6 x 1 | 2401W100405 | 2402W100405 |
| 45 x 5 | 6 x 1 | 2401W100455 | - |
| 50 x 5 | 6 x 1 | 2401W100505 | 2402W100505 |
| 60 x 5 | 6 x 1 | 2401W100605 | - |

Mesh 41 x 100mm.

Type W100 - 41/100 Serrated Edge

| Bar mm | Panel m | Mild Steel Code | Galvanised Code |
|--------|---------|-----------------|-----------------|
| 25 x 3 | 6 x 1 | 2401W100253S | 2402W100253S |
| 25 x 5 | 6 x 1 | 2401W100255S | 2402W100255S |

Mesh 41 x 100mm.

Type N100 - 30/100

| Bar mm | Panel m | Mild Steel Code | Galvanised Code |
|--------|---------|-----------------|-----------------|
| 25 x 3 | 6 x 1 | 2401N100253 | 2402N100253 |
| 25 x 5 | 6 x 1 | 2401N100255 | 2402N100255 |
| 30 x 3 | 6 x 1 | 2401N100303 | - |
| 30 x 5 | 6 x 1 | 2401N100305 | - |
| 40 x 5 | 6 x 1 | - | 2402N100405 |
| 45 x 5 | 6 x 1 | 2401N100455 | - |

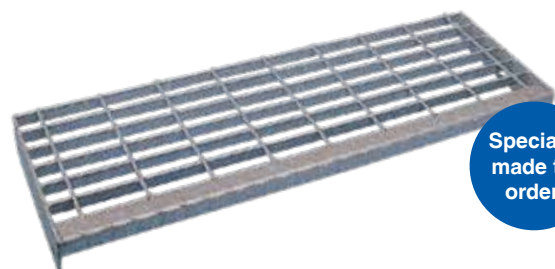
Mesh 30 x 100mm.

Universal Fixing Clip

The grating clip is the most common style of clip used for fixing down open steel flooring in the UK. It provides a quick and cost effective method of fixing. It is hot dip galvanised and comes standard with a top bracket to suit 30 - 41mm centres grating bars. Code: **2400600**.



TYPE 41/100mm



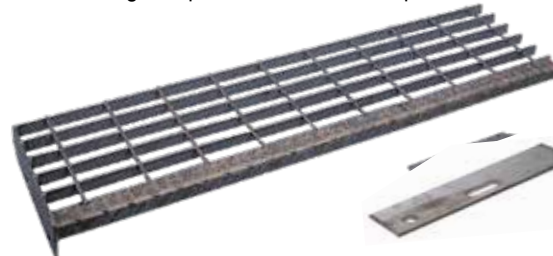
Specials made to order

| Bar mm | W x D mm | Mild Steel Code | Galvanised Code |
|--------|------------|-----------------|-----------------|
| 25 x 5 | 800 x 247 | 441108242 | 441208242 |
| 25 x 5 | 800 x 288 | 441108283 | 441208283 |
| 25 x 5 | 900 x 247 | 441109242 | 441209242 |
| 25 x 5 | 900 x 288 | 441109283 | 441209283 |
| 25 x 5 | 1000 x 247 | 441110242 | 441210242 |
| 25 x 5 | 1000 x 288 | 441110283 | 441210283 |
| 25 x 5 | 1200 x 288 | 441112283* | 441212283* |

*1200mm tread comes with Pyramid nosing (see page 398).

Cut Your Own Type 41/100mm

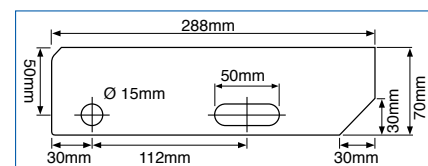
Cut stair tread to length required and weld-on the plate.



| Bar mm | W x D mm | Mild Steel Code |
|--------|------------|-----------------|
| 25 x 5 | 1000 x 288 | 441100 |

Weld-On Stair Tread Plate

| Thickness mm | Mild Steel Code |
|--------------|-----------------|
| 5 | 441100P |



Endless possibilities with the use of GRP (glass reinforced plastic)

- Steel
- Wrought Iron Components
- Gate Hardware
- Sliding Door Gear
- Gate Automation
- Mesh
- Decking & Subframe
- Flooring & Stair Treads**
- Handrailing
- Fencing
- Fixings





LCC Cast Iron Stair Treads

Landing Plates

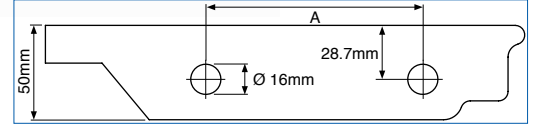


| Width mm | Length mm | Code |
|----------|-----------|-------------|
| 610 | 762 | 372762610 |
| 610 | 914 | 372914610 |
| 900 | 900 | 372900900 |
| 914 | 914 | 372914914 |
| 1067 | 1067 | 37210671067 |

Black prime finish.

LCC cast iron stair treads are generally supplied to order. Other sizes available on request.

Stair Treads

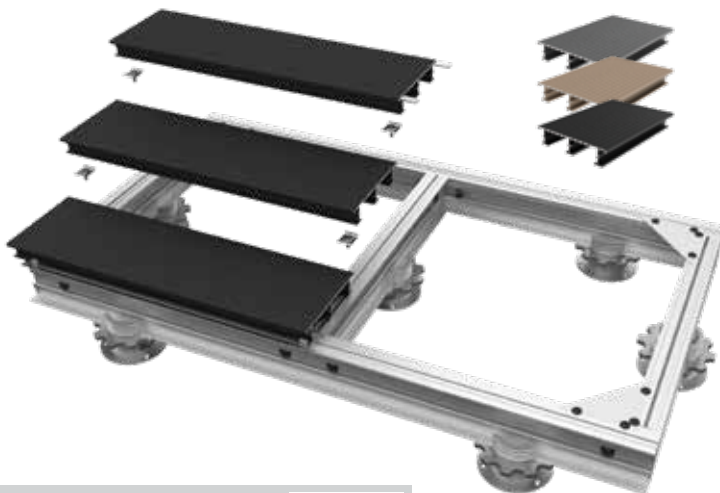


| Width mm | Depth mm | (A) mm | Code |
|----------|----------|--------|------------|
| 610 | 254 | 117 | 371610254 |
| 686 | 203 | 85 | 371686203 |
| 686 | 229 | 117 | 371686229 |
| 686 | 257 | 117 | 371686257 |
| 762 | 254 | 117 | 371762254 |
| 762 | 279 | 117 | 371762279 |
| 800 | 254 | 117 | 371800254 |
| 900 | 254 | 117 | 371900254 |
| 900 | 280 | 117 | 371900280 |
| 1000 | 254 | 117 | 3711000254 |
| 1000 | 280 | 117 | 3711000280 |

Black prime finish.



ALUMINIUM DECK BOARDS FOR A RANGE OF APPLICATIONS



Fully fire rated aluminium decking system designed for both residential and commercial environments such as high-rise balconies, walkways, roof terraces, pubs, gardens and all other high-rise applications and public areas.

- Achieves Euroclass Classifications of A1 & A2fl-s1
- Made from structural grade 6063 T6 aluminium
- Ideal for high rise concrete balconies & terraces
- Up to 50% cost saving compared to other systems
- 100 micron Qualicoat™ premium powder coating
- Adjustable cradle and deck support system
- Joist spacing up to 800mm
- Low surface temperatures
- Long lasting and low maintenance
- Lightweight and easy to install
- Mill finish subframes and cradles
- 10 year warranty on powder coating

Scan here to order a free sample.



Industrial Grating Flooring



Industrial gratings combine great strength with a light structure giving good non-slip properties. Ideal for use on platforms, galleries, gangways, storage floors, etc. The stock items only have an edge bar on two sides parallel to the first dimension shown in the table.

Flooring

Mesh 15 x 30mm - Galvanised

| Panel mm | Bearer Bars mm | Code |
|-------------|----------------|---------|
| 1000 x 1000 | 25 x 2 | 428110G |
| 1000 x 1500 | 25 x 2 | 428115G |
| 500 x 1000 | 25 x 2 | 428510G |
| 500 x 1500 | 25 x 2 | 428515G |
| 600 x 1000 | 25 x 2 | 428610G |
| 600 x 1500 | 25 x 2 | 428615G |
| 700 x 1000 | 25 x 2 | 428710G |
| 700 x 1500 | 25 x 2 | 428715G |
| 800 x 1000 | 25 x 2 | 428810G |
| 800 x 1500 | 25 x 2 | 428815G |
| 900 x 1000 | 25 x 2 | 428910G |
| 900 x 1500 | 25 x 2 | 428915G |

Mesh 30 x 30mm - Galvanised

| Panel mm | Bearer Bars mm | Code |
|-------------|----------------|---------|
| 1000 x 1000 | 25 x 2 | 429110G |
| 1000 x 1500 | 25 x 2 | 429115G |
| 400 x 1000 | 25 x 2 | 429504G |
| 500 x 1000 | 25 x 2 | 429510G |
| 500 x 1500 | 25 x 2 | 429515G |
| 600 x 1000 | 25 x 2 | 429610G |
| 600 x 1500 | 25 x 2 | 429615G |
| 700 x 1000 | 25 x 2 | 429710G |
| 700 x 1500 | 25 x 2 | 429715G |
| 800 x 1000 | 25 x 2 | 429810G |
| 800 x 1500 | 25 x 2 | 429815G |
| 900 x 1000 | 25 x 2 | 429910G |
| 900 x 1500 | 25 x 2 | 429915G |

Mesh 30 x 30mm - Mild Steel

| Panel mm | Bearer Bars mm | Code |
|-------------|----------------|------------|
| 1000 x 2000 | 25 x 2 | 42SK189120 |
| 1000 x 2000 | 30 x 2 | 42SK191020 |
| 1200 x 2000 | 30 x 2 | 42SK191220 |

For our range of durbar flooring and stair treads, see page 396.

Fixings

Clamp Fitting Fixing Clip



| Code |
|------------|
| 4233990010 |

Clamp Fitting

For joining multiple gratings



| Code |
|------------|
| 4233990020 |

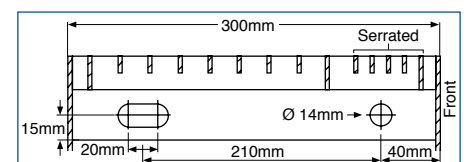
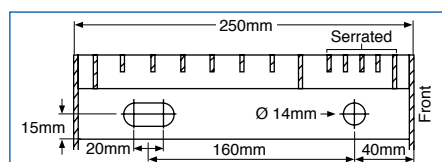
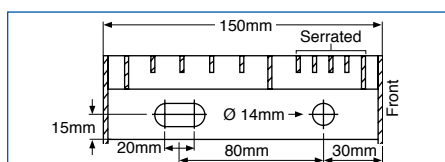
Industrial Grating Stair Treads

Grating pattern to match our standard grating sizes and serrated edges at the front of the treads for superb non-slip properties.

Galvanised Mesh 20 x 30mm Non-Slip Nosing 9 x 30mm



| Edge Bar Ends mm | Edge Bar Sides mm | W x D mm | Code |
|------------------|-------------------|------------|---------|
| 50 x 3 | 60 x 3 | 500 x 150 | 427155G |
| 50 x 3 | 60 x 3 | 600 x 150 | 427156G |
| 50 x 3 | 60 x 3 | 700 x 250 | 427257G |
| 50 x 3 | 60 x 3 | 800 x 250 | 427258G |
| 50 x 3 | 60 x 3 | 900 x 250 | 427259G |
| 50 x 3 | 60 x 3 | 1000 x 250 | 427251G |
| 60 x 3 | 60 x 3 | 1000 x 300 | 427301G |
| 60 x 3 | 75 x 3 | 1200 x 300 | 427302G |
| 70 x 3 | 75 x 3 | 1500 x 300 | 427305G |

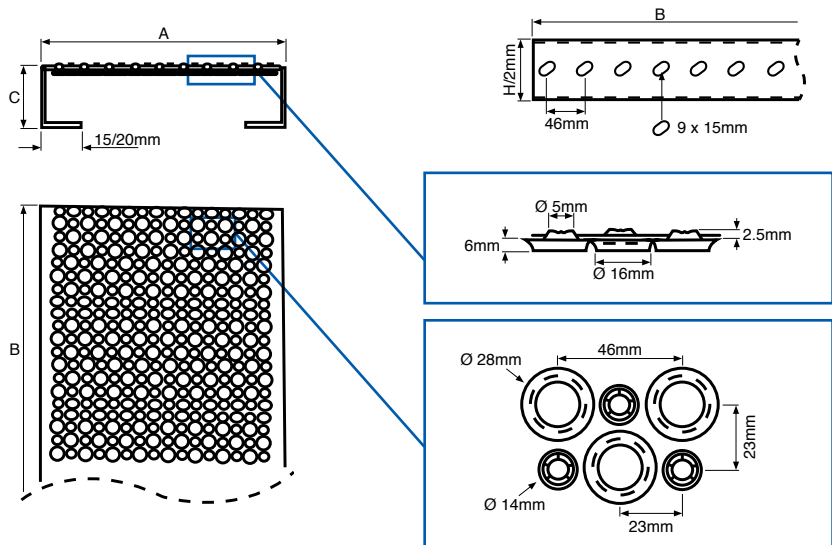




“Mixte”



- Holes Ø 6mm burst embossed downwards
- Holes Ø 11mm embossed upwards
- Non-slip surface
- Draining surface % open area: 21.0



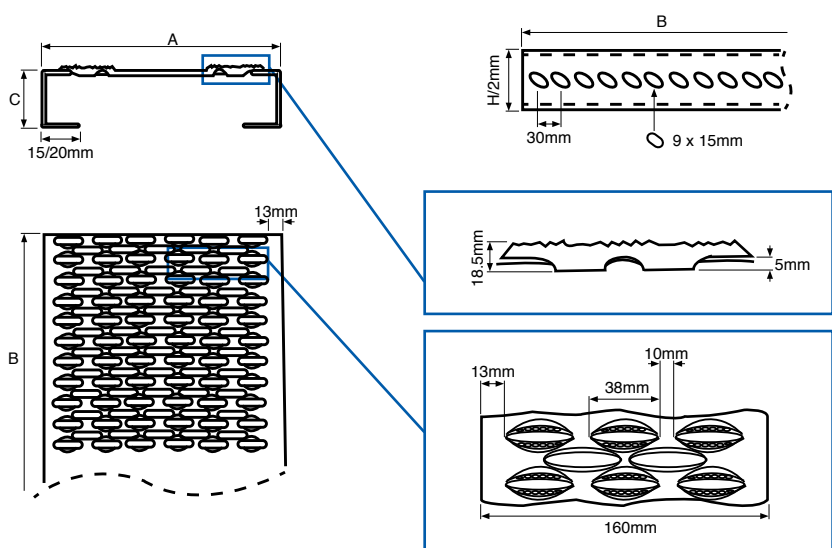
Galvanised

| (A) Width mm | (B) Length m | (C) Height mm | Thickness mm | Code |
|--------------|--------------|---------------|--------------|----------|
| 180 | 4 | 50 | 2 | 34240335 |
| 240 | 4 | 50 | 2 | 34240336 |
| 300 | 4 | 50 | 2 | 34240337 |

“Plus”



- Split and embossed surface with serrated finish
- Very strong and non-slip
- Recommended for high risk slip areas
- Draining surface % open area: 47.0



Galvanised

| (A) Width mm | (B) Length m | (C) Height mm | Thickness mm | Code |
|--------------|--------------|---------------|--------------|----------|
| 180 | 4 | 50 | 2 | 34240340 |
| 240 | 4 | 50 | 2 | 34240341 |
| 300 | 4 | 50 | 2 | 34240342 |

Steel

Wrought Iron Components

Gate Hardware

Sliding Door Gear

Gate Automation

Mesh

Decking & Subframe

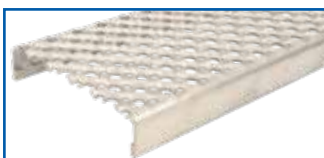
Flooring & Stair Treads

Handrailing

Fencing

Fixings

Steel

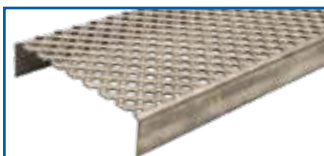


Stainless Steel Grade 304

| Width mm | Height mm | Length m | Thickness mm | Code |
|----------|-----------|----------|--------------|-------------|
| 150 | 32 | 3 | 2 | 429531532SS |
| 200 | 45 | 3 | 2 | 429532045SS |
| 225 | 45 | 3 | 2 | 429532245SS |
| 250 | 45 | 3 | 2 | 429532545SS |
| 275 | 45 | 3 | 2 | 429532745SS |

Stainless steel Grade 316 available to order.

Wrought Iron Components



Aluminium

| Width mm | Height mm | Length m | Thickness mm | Code |
|----------|-----------|----------|--------------|--------------|
| 100 | 45 | 6 | 3 | 4214601045AL |
| 150 | 45 | 6 | 3 | 4214601545AL |
| 200 | 45 | 6 | 3 | 4214602045AL |

Gate Hardware

Sliding Door Gear

Anti-Slip Stair Treads

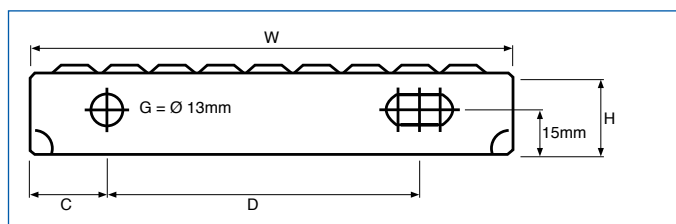
Stair Treads For Grip Performance

A formed step with 9mm raised punched holes and 5mm depressed drainage holes providing an average slip resistance of PTV50 wet. The stair treads have rolled front edges that increase the strength and protect the Achilles tendon in use. Note: 300mm width has an additional hole \varnothing 13mm, c/c 408mm from G, to provide an extra fixing point.

These treads are designed according to British Standard BS4592 Part 0: 2006.



Generally supplied to order. Please check for availability.



| (W) mm | (H) mm | (C) mm | (D) mm |
|--------|--------|--------|--------|
| 150 | 45/ - | 35 | 78 |
| 200 | 45/57 | 45 | 102 |
| 225 | 45/57 | 45 | 127 |
| 250 | 45/57 | 50 | 142 |
| 275 | 45/57 | 62 | 143 |
| 300 | 45/57 | 50 | 192 |

Gate Automation

Mesh

Decking & Subframe

Flooring & Stair Treads

Galvanised

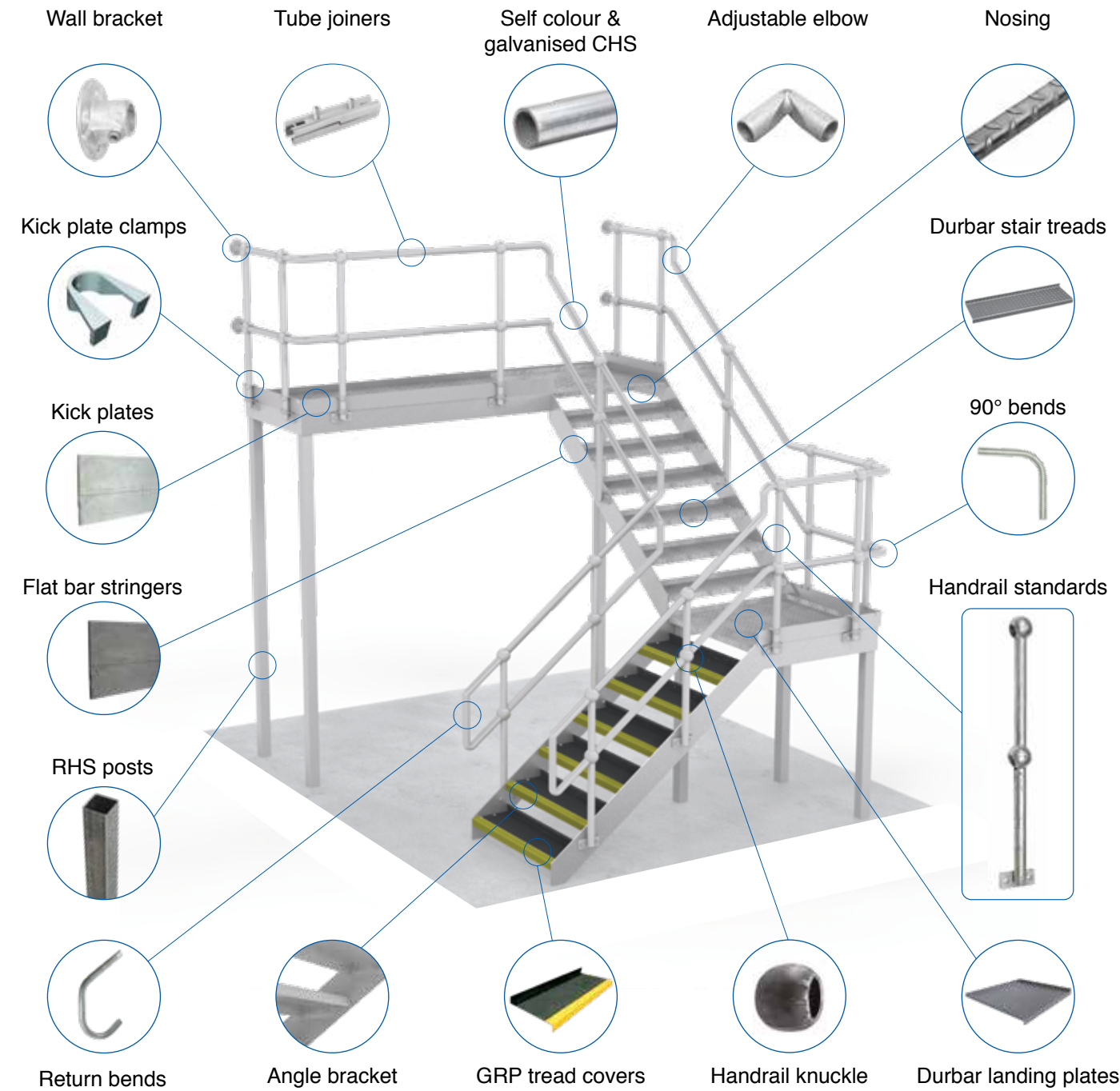
| Width mm | Depth mm | Height mm | Thickness mm | Code |
|----------|----------|-----------|--------------|----------|
| 600 | 200 | 45 | 2 | 4202006G |
| 600 | 225 | 45 | 2 | 4202206G |
| 600 | 250 | 45 | 2 | 4202506G |
| 600 | 275 | 45 | 2 | 4202706G |
| 700 | 150 | 45 | 2 | 4201507G |
| 700 | 225 | 45 | 2 | 4202207G |
| 700 | 250 | 45 | 2 | 4202507G |
| 800 | 200 | 45 | 2 | 4202008G |
| 800 | 250 | 45 | 2 | 4202508G |
| 900 | 250 | 45 | 2 | 4202509G |
| 900 | 275 | 45 | 2 | 4202709G |
| 1000 | 250 | 45 | 2 | 4202510G |
| 1000 | 275 | 45 | 2 | 4202710G |
| 1000 | 300 | 45 | 2 | 4203010G |
| 1100 | 200 | 57 | 2 | 4202011G |
| 1100 | 275 | 57 | 2 | 4202711G |
| 1100 | 300 | 57 | 2 | 4203011G |
| 1200 | 250 | 57 | 2 | 4202512G |
| 1200 | 300 | 57 | 2 | 4203012G |

Handrailing

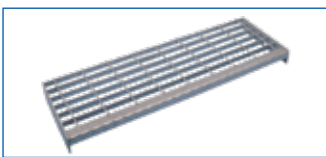
Fencing

Fixings

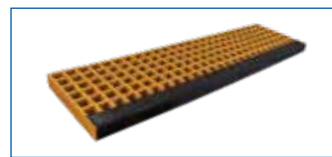
FLOORING & HANDRAIL SPECIALISTS.



Open Steel Stair Tread



GRP Stair Tread



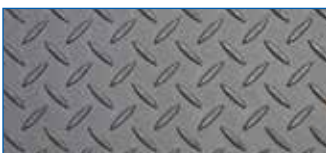
Anti-Slip Stair Tread



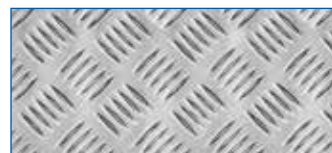
Flat Bar Stair Tread



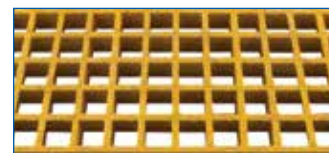
Durbar Floor Plate



Aluminium Tread Plate



GRP Grating

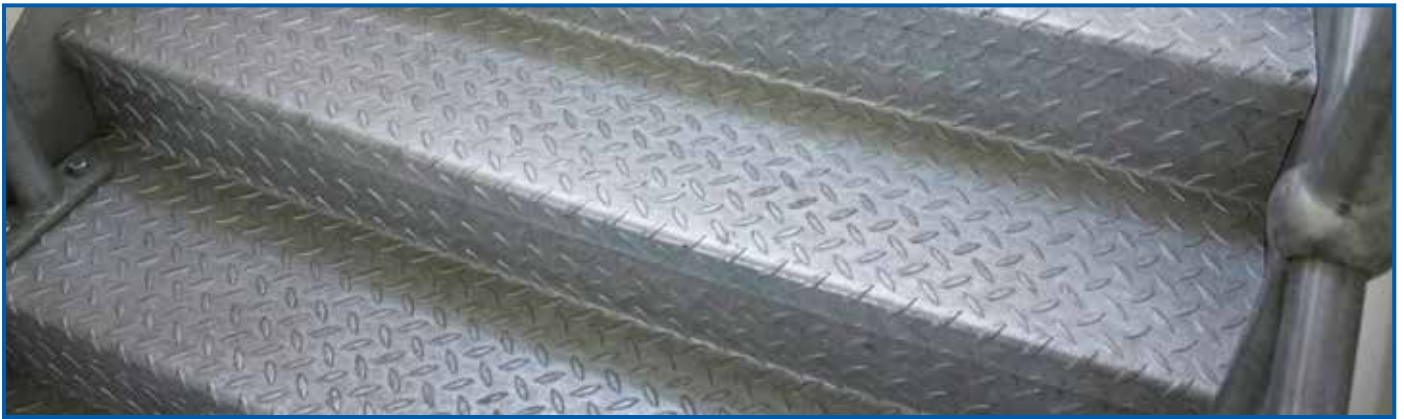


GRP Flat Sheet



- Steel
- Wrought Iron Components
- Gate Hardware
- Sliding Door Gear
- Gate Automation
- Mesh
- Decking & Subframe
- Flooring & Stair Treads
- Handrailing
- Fencing
- Fixings

- Steel
- Wrought Iron
- Gate
- Hardware
- Sliding Door Gear
- Gate Automation
- Mesh
- Decking & Subframe
- Flooring & Stair Treads
- Handrailing
- Fencing
- Fixings



Durbar Pattern Steel Floor Plates

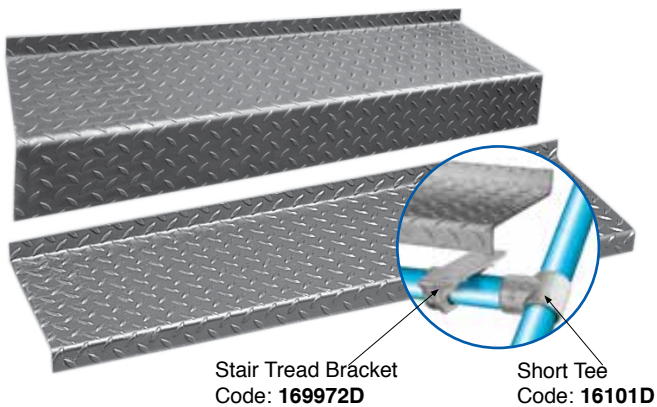


| W x L mm | Thickness mm | Weight kg/m ² | Code |
|-------------|--------------|--------------------------|-------------|
| 2000 x 1000 | 3.0 | 26.20 | 35016313 |
| 2000 x 1000 | 4.5 | 37.97 | 350163145 |
| 2000 x 1000 | 6.0 | 49.74 | 35016316 |
| 2500 x 1250 | 2.0 | 53.00 | 3502842010* |
| 2500 x 1250 | 3.0 | 81.00 | 3502843010* |
| 2500 x 1250 | 3.0 | 26.19 | 35018413 |
| 2500 x 1250 | 4.5 | 37.97 | 350184145 |
| 2500 x 1250 | 6.0 | 49.74 | 35018416 |
| 2500 x 1250 | 8.0 | 65.44 | 35018418 |
| 2500 x 1250 | 10.0 | 81.44 | 350184110 |

*BZP.

For anti-slip planking See page 393.

Durbar Stair Treads - Mild Steel



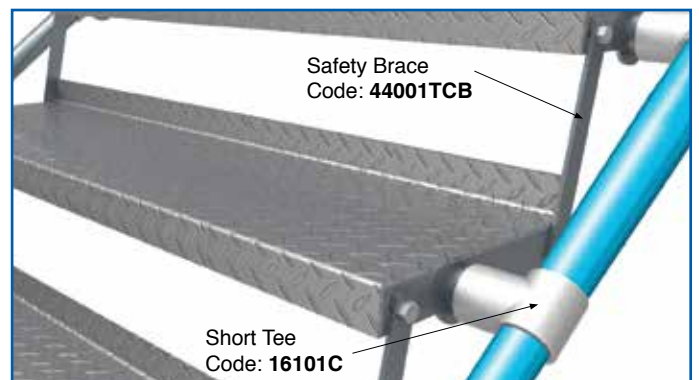
Treads With Tube Fixing - Galvanised



| W x D mm | Thickness mm | Description | Code |
|-------------|--------------|--------------------------|-------|
| 900 x 265 | 3.0 | 40mm turn up/down | 44014 |
| 1000 x 265 | 3.0 | 40mm turn up/down | 44013 |
| 800 x 265 | 4.5 | 40mm turn up/down | 44011 |
| 900 x 265 | 4.5 | 40mm turn up/down | 44012 |
| 1000 x 265 | 4.5 | 40mm turn up/down | 44001 |
| 1250 x 265 | 4.5 | 40mm turn up/down | 44002 |
| 1250 x 265 | 6.0 | 50mm turn up/down | 44003 |
| 1500 x 265 | 6.0 | 50mm turn up/down | 44004 |
| 1000 x 265* | 4.5 | 50mm turn up/ 145mm down | 44005 |
| 1250 x 265* | 4.5 | 50mm turn up/ 145mm down | 44006 |

*DDA style.

| W x D mm | Thickness mm | Tube Ø mm | Description | Code |
|------------|--------------|-----------|-----------------------------|---------|
| 1000 x 265 | 4.5 | 42.4 | 40mm Turn Up/Down With Tube | 44001TC |



Stair treads can be made to your exact requirements.

Treads - Galvanised



| W x D mm | Thickness mm | Description | Code |
|------------|--------------|--------------------------------|--------|
| 800 x 265 | 4.5 | 40mm turn up/down without tube | 44011T |
| 900 x 265 | 4.5 | 40mm turn up/down without tube | 44012T |
| 1000 x 265 | 4.5 | 40mm turn up/down without tube | 44001T |
| 1250 x 265 | 4.5 | 40mm turn up/down without tube | 44002T |

Spiral Stair Treads - Mild Steel



Clockwise Ascending Anti-Clockwise Ascending

| W x D mm | Thickness mm | Description | Code |
|-----------|--------------|--|----------|
| 600 x 270 | 4.5 | Clockwise ascending 50mm turn up/down | 44001SP |
| 600 x 270 | 4.5 | Anti-Clockwise ascending 50mm turn up/down | 44001SPR |

Landing Plates - Mild Steel

1 up & 1 down turn



| W x D mm | Thickness mm | Description | Code |
|-------------|--------------|----------------------|--------|
| 800 x 800 | 4.5 | 1 up and 1 down turn | 44011P |
| 900 x 900 | 4.5 | 1 up and 1 down turn | 44012P |
| 1000 x 900 | 4.5 | 1 up and 1 down turn | 44001P |
| 1000 x 1000 | 4.5 | 1 up and 1 down turn | 44005P |
| 1250 x 1150 | 4.5 | 1 up and 1 down turn | 44002P |
| 1250 x 1250 | 4.5 | 1 up and 1 down turn | 44006P |

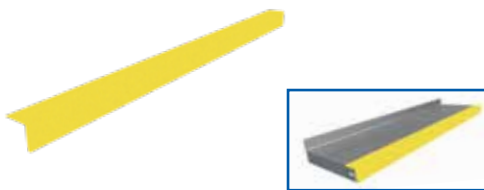
Landing Plates - Mild Steel

3 up & 1 down turn



| W x D mm | Thickness mm | Description | Code |
|-------------|--------------|----------------------|----------|
| 800 x 800 | 4.5 | 3 up and 1 down turn | 44011iLP |
| 900 x 900 | 4.5 | 3 up and 1 down turn | 44012iLP |
| 1000 x 1000 | 4.5 | 3 up and 1 down turn | 44001iLP |
| 1250 x 1250 | 4.5 | 3 up and 1 down turn | 44002iLP |

GRP Nosing For Stair Treads



| Description | Length m | Nosing mm | Code |
|--------------------|----------|-----------|-----------|
| Coarse Grit Yellow | 1000 | 55 x 55 | 3302551EY |
| Fine Grit Yellow | 1000 | 55 x 55 | 3302551iY |
| Coarse Grit Yellow | 3020 | 55 x 55 | 3302553EY |
| Fine Grit Yellow | 3020 | 55 x 55 | 3302553iY |

Aluminium Angle



| Length m | Size mm | Colour | Code |
|----------|---------------|-----------------------|---------|
| 3 | 40 x 40 x 1.5 | Signal Yellow RAL1003 | 76A003Y |

Anti-slip.

Aluminium Alloy Tread Plate

Five Bar Pattern. Grade 5754 H114. Tread Height 1.5mm.



| W x L mm | Thickness mm | Weight Kg/m2 | Code |
|-------------|--------------|--------------|----------|
| 2000 x 1000 | 3.0 | 8.15 | 3505213 |
| 2500 x 1250 | 2.0 | 3.06 | 35058452 |
| 2500 x 1250 | 3.0 | 13.33 | 35058453 |
| 2500 x 1250 | 4.5 | 20.45 | 35058445 |
| 2500 x 1250 | 6.0 | 27.43 | 35058456 |

Steel

Wrought Iron Components

Gate Hardware

Sliding Door Gear

Gate Automation

Mesh

Decking & Subframe

Flooring & Stair Treads

Handrailing

Fencing

Fixings

Expanded Metal Flooring

Walkway mesh



Can be supplied cut to size.
Certain specs available in aluminium & stainless steel.

Flooring

| Ref. No. | Mesh Pitch mm | | Strand mm | | Open Area % | Weight Kgs/Sht | Sheet mm | | Code |
|----------|---------------|-------|-----------|------|-------------|----------------|----------|------|-------------|
| | LW | SW | W | T | | | LWM | SWM | |
| N7478 | 38.10 | 13.86 | 5.00 | 2.50 | 28 | 26.36 | 1220 | 1525 | 020045N7478 |
| 2496 | 60.96 | 25.40 | 6.10 | 4.50 | 51 | 51.47 | 2440 | 1220 | 0200842496 |
| 4894 | 121.92 | 38.10 | 13.06 | 6.00 | 38 | 133.55 | 2265 | 1830 | 0200764894 |
| 4899 | 121.92 | 35.85 | 9.53 | 6.00 | 50 | 78.00 | 1220 | 2440 | 0200844899 |
| 4896 | 121.92 | 33.87 | 6.35 | 4.50 | 65 | 39.38 | 1220 | 2440 | 0200484896 |

Fixing Clips



| Code |
|--------|
| 020217 |

For use with Ref no. 4896.



| Code |
|---------|
| 0202943 |

For use with Ref no. 2496.

Make Your Own Stair Treads

Durbar Nosing



| W x D mm | Code |
|----------|--------|
| 25 x 25 | 25NOSE |

Length 1m. Thickness 3mm.

Pyramid Anti-Slip Nosing



| Width mm | Code |
|----------|---------|
| 35 | 25NOSE2 |

Length 3m. Thickness 4mm.

Perforated Nosing



| Width mm | Code |
|----------|---------|
| 35 | 25NOSE3 |

Length 3m. Thickness 2mm. Holes Ø 9mm.

Angle Brackets



| W x D mm | Length mm | Fix | Code |
|----------|-----------|------|-------|
| 50 x 50 | 160 | Bolt | 44008 |

Thickness 5mm. Fixing holes 25 x 14mm both sides.

| | | | |
|---------|-----|------|-------|
| 50 x 50 | 160 | Weld | 44009 |
|---------|-----|------|-------|

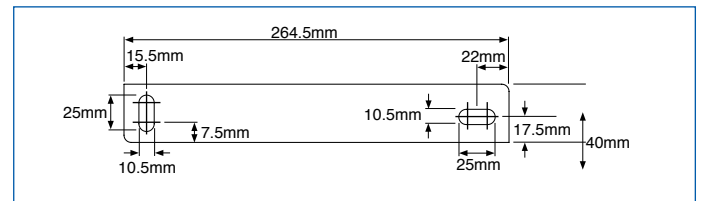
Thickness 5mm. Fixing holes 25 x 14mm one side.

For our range of internal & external GRP nosing, see page 400.

Side Plate For Stair Tread



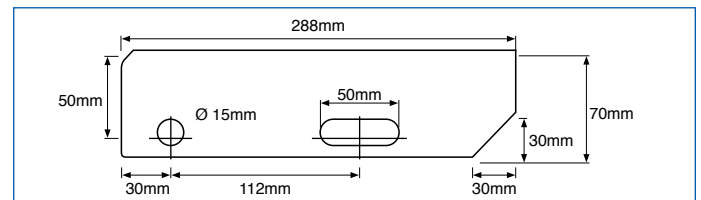
| Width mm | Length mm | Thickness mm | Code |
|----------|-----------|--------------|-------|
| 40 | 264.5 | 5 | 44010 |



Weld-On Stair Tread Plate



| Width mm | Length mm | Thickness mm | Code |
|----------|-----------|--------------|---------|
| 70 | 288 | 5 | 441100P |



Socket Button Head Set Bolt



| Button Head Bolt Ø x L mm | Code |
|---------------------------|--------------|
| M8 x 30 | 5006BS08X30F |
| M10 x 30 | 5006BS10X30F |

Supplied with bolt, washer & hex nyloc nut.

Hex Full Nut



| To Suit Ø mm | Code |
|--------------|----------|
| M8 | 5006HN08 |
| M10 | 5006HN10 |

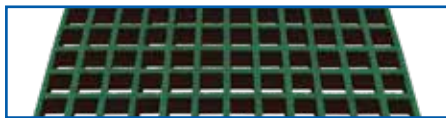
For anti-slip stair treads see page 394.



Features

- Top quality
- Corrosion resistant
- Slip resistant
- Fire retardant
- High weight to strength ratio
- Easy to use
- Long service life
- Integral quartz grit top

Green



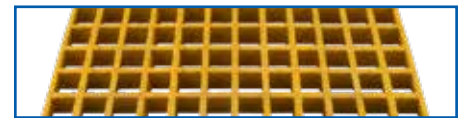
| Grating □ mm | Depth mm | Panel Size mm | Code |
|--------------|----------|---------------|--------------|
| 38 | 25 | 996 x 1985 | 33213825GN |
| 38 | 25 | 996 x 3010 | 33313825GN |
| 38 | 25 | 1220 x 3660 | 3336123825GN |
| 38 | 38 | 996 x 1985 | 33213838GN |
| 38 | 38 | 996 x 3010 | 33313838GN |
| 38 | 38 | 1220 x 3660 | 3336123838GN |
| 50 | 50 | 1220 x 3660 | 3336125050GN |

Grey



| Grating □ mm | Depth mm | Panel Size mm | Code |
|--------------|----------|---------------|--------------|
| 12 | 30 | 1247 x 4047 | 331241230GY |
| 38 | 25 | 996 x 1985 | 33213825GY |
| 38 | 25 | 996 x 3010 | 33313825GY |
| 38 | 25 | 1220 x 3660 | 3336123825GY |
| 38 | 38 | 996 x 1985 | 33213838GY |
| 38 | 38 | 996 x 3010 | 33313838GY |
| 38 | 38 | 1220 x 3660 | 3336123838GY |
| 50 | 50 | 1220 x 3660 | 3336125050GY |

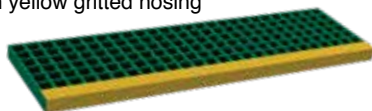
Yellow



| Grating □ mm | Depth mm | Panel Size mm | Code |
|--------------|----------|---------------|-------------|
| 38 | 25 | 996 x 1985 | 33213825Y |
| 38 | 38 | 996 x 1985 | 33213838Y |
| 38 | 25 | 996 x 3010 | 33313825Y |
| 38 | 38 | 996 x 3010 | 33313838Y |
| 38 | 25 | 1220 x 3660 | 3336123825Y |
| 38 | 38 | 1220 x 3660 | 3336123838Y |
| 50 | 50 | 1220 x 3660 | 3336125050Y |

Green

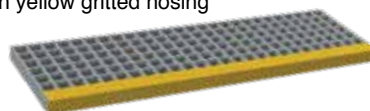
With yellow gritted nosing



| Grating □ mm | Depth mm | Tread Size mm | Code |
|--------------|----------|---------------|-------------|
| 38 | 38 | 996 x 275 | 331027538GN |
| 38 | 38 | 1220 x 275 | 331227538GN |

Grey

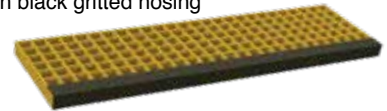
With yellow gritted nosing



| Grating □ mm | Depth mm | Tread Size mm | Code |
|--------------|----------|---------------|-------------|
| 38 | 38 | 996 x 275 | 331027538GY |
| 38 | 38 | 1220 x 275 | 331227538GY |

Yellow

With black gritted nosing



| Grating □ mm | Depth mm | Tread Size mm | Code |
|--------------|----------|---------------|------------|
| 38 | 38 | 996 x 275 | 331027538Y |
| 38 | 38 | 1220 x 275 | 331227538Y |

Sand



| Grating □ mm | Depth mm | Panel Size mm | Code |
|--------------|----------|---------------|-------------|
| 12 | 22 | 1220 x 3660 | 3336121222S |
| 12 | 30 | 1247 x 4047 | 331241230S |

Marina Mesh - Light Grey



| Grating □ mm | Depth mm | Panel Size mm | Code |
|--------------|----------|---------------|-------------|
| 14 | 22 | 1247 x 4047 | 331241422GY |

Marina mesh is a long-term viable alternative to wooden pontoons. Small apertures stop items falling through, yet bigger apertures on the underside, to retain its lightweight appeal.

For GRP flooring see page 400.

'M' Clip



| For Depth mm | Code |
|--------------|--------|
| 25 | 330002 |
| 38 | 330001 |
| 50 | 330003 |

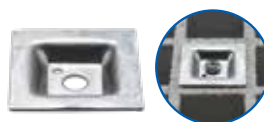
Round Disc



| Ø mm | Code |
|------|--------|
| 45 | 330004 |

Bolt not supplied. Suitable for M8 bolt.

Square Clip



| ■ mm | Code |
|------|--------|
| 45 | 330005 |

For use with 38mm grating. Bolt not supplied. Suitable for M8 bolt.

For anti-slip planking see page 393.

GRP Flooring

Glass reinforced plastic



Steel
Wrought Iron Components
Gate Hardware
Sliding Door Gear
Gate Automation
Mesh
Decking & Subframe
Flooring & Stair Treads
Handrailing
Fencing
Fixings



Applications:

- Mezzanine floors, walkways, pedestrian bridge deck and flooring
- Odour control covers in waste water treatment
- Top deck covers for cooling towers
- Baffles in water treatment tanks
- Floor defence barriers, no theft value
- Stop locks

Mechanical Properties

The following data has been calculated from measurements made of the full section modulus - EN 13706, Annex D.

Anti-Slip Decking Plank



| Colour | Length m | Width mm | Height mm | Code |
|--------|----------|----------|-----------|-------------|
| Grey | 6.0 | 500 | 40 | 33DECK500GY |

Load Table

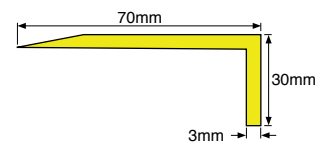
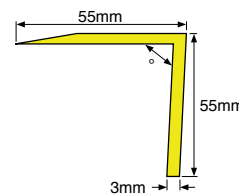
UDL Loading

| Span mm | 750 | 1000 | 1250 | 1500 | 1750 |
|--------------------|-------|-------|------|------|------|
| Deflection = L/200 | 3.75 | 5.00 | 6.25 | 7.50 | 8.75 |
| Load kN/ m2 | 42.73 | 18.03 | 9.23 | 5.34 | 3.36 |

Centre Point Loading

| Span mm | 750 | 1000 | 1250 | 1500 | 1750 |
|--------------------|-------|------|------|------|------|
| Deflection = L/200 | 3.75 | 5.00 | 6.25 | 7.50 | 8.75 |
| Load kN/ m2 | 10.02 | 5.36 | 3.61 | 2.50 | 1.84 |

GRP Nosing



- Anti-slip properties
- Increased safety on steps & stairs

- High contrasting colour aids visibility
- Easily cut to required size

- Resistant to swelling or stretching
- Meets current building regulations

Type i

Type I with its smaller grit size is usually for internal use.

Yellow



| Nosing mm | Length m | Code |
|-----------|----------|-----------|
| 55 x 55 | 1 | 3302551iY |
| 55 x 55 | 3 | 3302553iY |
| 70 x 30 | 1 | 3302731iY |
| 70 x 30 | 3 | 3302733iY |

Type E

Type E with a much heavier grit profile is ideal for the rigours of the external environment.

Yellow



| Nosing mm | Length m | Code |
|-----------|----------|-----------|
| 55 x 55 | 1 | 3302551EY |
| 55 x 55 | 3 | 3302553EY |
| 70 x 30 | 1 | 3302731EY |
| 70 x 30 | 3 | 3302733EY |

Fixing Kit

- 385ml Webgrip mastic
- 60 screws & plugs
- Coverage for five 3000mm lengths



| Code |
|-------|
| 33009 |



Flat sheets have the same characteristics as our GRP stair tread and landing covers, providing a fast, safe and effective solution to slippery, worn or uneven flooring. The sheets ensure a highly visible, robust and durable slip resistant walking surface.

Yellow



Black



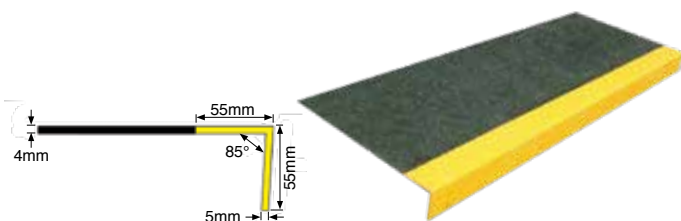
| Size mm | Thickness mm | Code |
|-------------|--------------|---------------|
| 1000 x 2000 | 4 | 33634Y |
| 1220 x 2440 | 4 | 33844Y |

| Size mm | Thickness mm | Code |
|-------------|--------------|---------------|
| 1000 x 2000 | 4 | 33634B |
| 1220 x 2440 | 4 | 33844B |

GRP Tread Covers

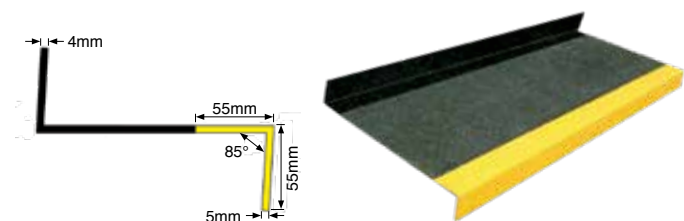
A fast, convenient way of providing solid, slip resistant footing to existing stairs. The contrasting coloured nosing complies with the UK Building Regulations as applicable from May 2004 and those obligations required under the DDA. The tread cover is easy to install and can be applied to almost any surface including concrete, steel or wood.

Tread Covers



| Width mm | Depth mm | Code |
|----------|----------|-----------------|
| 1000 | 250 | 33012 |
| 1000 | 345 | 33TC002B |
| 1200 | 250 | 33035 |
| 1500 | 250 | 33011 |
| 3660 | 345 | 33TC003B |

Up/Down Turn Tread Covers

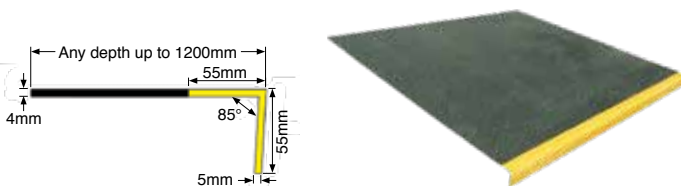


| Width mm | Depth mm | Code |
|----------|----------|-----------------|
| 1000 | 265 | 33TC001B |

GRP Landing Covers

Fixing Kit Includes:

- 385ml Webgrip mastic
- 30 screws & plugs
- Coverage for one 3000 x 345mm tread



| Width mm | Depth mm | Code |
|----------|----------|--------------|
| 1000 | 1000 | 33034 |
| 1200 | 1200 | 33015 |



| Code |
|--------------|
| 33017 |

GRP Profiles & Fixings

Glass reinforced plastic



We stock a wide range of glass fibre reinforced pultruded structural profiles. Our technically advanced GRP formulation delivers excellent corrosion resistance and durability to provide a cost effective alternative to steel, aluminium and timber. Suitable for walkways, platforms, ladders and handrails, lightweight GRP is easy to install and does not require heavy lifting equipment.

U Channel



| Colour | Length mm | Width mm | Height mm | Thickness mm | Code |
|--------|-----------|----------|-----------|--------------|----------------------|
| Grey | 6000 | 152.40 | 42.90 | 9.50 | 33071504381GY |
| Grey | 6000 | 50.00 | 30.00 | 4.00 | 330750304GY |
| Grey | 6000 | 76.00 | 25.40 | 6.35 | 33077625435GY |
| Grey | 6000 | 100.00 | 50.00 | 6.00 | 3307100506GY |
| Grey | 6000 | 150.00 | 50.00 | 6.00 | 3307150506GY |
| Grey | 6000 | 200.00 | 60.00 | 8.00 | 3307200608GY |
| Grey | 6000 | 200.00 | 60.00 | 9.50 | 33072006095GY |
| Grey | 6000 | 280.00 | 70.00 | 12.00 | 33072807012GY |

Angle



| Colour | Length mm | Width mm | Height mm | Thickness mm | Code |
|--------|-----------|----------|-----------|--------------|----------------------|
| Grey | 6000 | 25 | 25 | 3.00 | 3304253GY |
| Grey | 6000 | 50 | 50 | 3.00 | 3304503GY |
| Grey | 6000 | 50 | 50 | 5.00 | 3304505GY |
| Grey | 6000 | 51 | 51 | 6.35 | 330451635GY |
| Grey | 6000 | 60 | 40 | 7.00 | 330460407GY |
| Grey | 6000 | 60 | 60 | 8.00 | 3304608GY |
| Green | 6000 | 60 | 60 | 8.00 | 3304608GN |
| Grey | 6000 | 75 | 75 | 10.00 | 33047575101GY |
| Grey | 6000 | 100 | 100 | 8.00 | 33041008GY |

Universal 'I' Beam



| Colour | Length mm | Width mm | Height mm | Thickness mm | Code |
|--------|-----------|----------|-----------|--------------|------------------------|
| Grey | 6000 | 70.00 | 120.00 | 8.00 | 3311120708GY |
| Grey | 6000 | 80.00 | 152.00 | 10.00 | 33111528010GY |
| Grey | 6000 | 76.00 | 152.00 | 6.35 | 331115276635GY |
| Grey | 6000 | 100.00 | 200.00 | 9.50 | 331120010095GY |
| Grey | 6000 | 200.00 | 200.00 | 10.00 | 331120020010GY* |

* 'H' beam.

Flat Bar



| Colour | Length mm | Width mm | Thickness mm | Code |
|--------|-----------|----------|--------------|--------------------|
| Grey | 6000 | 40 | 5.0 | 3303405GY |
| Grey | 6000 | 80 | 8.0 | 3303808GY |
| Grey | 3000 | 200 | 9.5 | 330320095GY |
| Green | 3000 | 200 | 9.5 | 330320095GN |
| Grey | 3000 | 926 | 3.1 | 330393631GY |

Hollow Box Section



| Colour | Length mm | Width mm | Height mm | Thickness mm | Code |
|--------|-----------|----------|-----------|--------------|--------------------------|
| Grey | 6000 | 25.00 | 25.00 | 3.00 | 3305253GY |
| Grey | 6000 | 38.00 | 38.00 | 3.20 | 33053832GY |
| Yellow | 6000 | 38.00 | 38.00 | 3.20 | 33053832Y |
| Grey | 6000 | 38.00 | 38.00 | 5.00 | 3305385GY |
| Yellow | 6000 | 38.00 | 38.00 | 5.00 | 3305385Y |
| Grey | 6000 | 44.00 | 44.00 | 6.00 | 3305446GY |
| Yellow | 6000 | 44.00 | 44.00 | 6.00 | 3305446Y |
| Grey | 6000 | 51.00 | 51.00 | 3.20 | 33055132GY |
| Yellow | 6000 | 51.00 | 51.00 | 3.20 | 33055132Y |
| Grey | 6000 | 51.00 | 51.00 | 6.35 | 3305516GY |
| Yellow | 6000 | 51.00 | 51.00 | 6.35 | 3305516Y |
| Green | 6000 | 51.00 | 51.00 | 6.35 | 3305516GN |
| Grey | 6000 | 60.00 | 60.00 | 4.50 | 3305606045GY |
| Yellow | 6000 | 60.00 | 60.00 | 4.50 | 3305606045Y |
| Green | 6000 | 60.00 | 60.00 | 4.50 | 3305606045GN |
| Grey | 6000 | 76.00 | 76.00 | 6.35 | 33057676635GY |
| Grey | 6000 | 101.60 | 101.60 | 6.35 | 330510161016635GY |
| Green | 6000 | 101.60 | 101.60 | 6.35 | 330510161016635GN |

Box End Cap

Inserts



| Colour | To Suit Hollow Section W x T mm | Code |
|--------|---------------------------------|------------------|
| Black | 51 x 3.00 | 333202513 |
| Black | 51 x 6.00 | 333202516 |
| Black | 60 x 4.50 | 33320160 |
| Black | 76 x 6.35 | 33320176 |
| Black | 101 x 6.35 | 333201101 |

Ladder Rung

Ribbed



| Colour | Length mm | Outside Ø mm | Inside Ø mm | Thickness mm | Code |
|--------|-----------|--------------|-------------|--------------|----------------|
| Grey | 6000 | 34.50 | 25.50 | 3.25 | 33R01GY |
| Yellow | 6000 | 34.50 | 25.50 | 3.25 | 33R01Y |

Fixing Clips

'M' Clip



| For Depth mm | Code |
|--------------|---------------|
| 25 | 330002 |
| 38 | 330001 |
| 50 | 330003 |

Round Disc



| Ø mm | Code |
|------|---------------|
| 45 | 330004 |

Bolt not supplied. Suitable for M8 bolt.

Square Clip



| ■ mm | Code |
|------|---------------|
| 45 | 330005 |

For use with 38mm grating. Bolt not supplied. Suitable for M8 bolt.



Steel

Wrought Iron Components

Gate Hardware

Sliding Door Gear

Gate Automation

Mesh

Decking & Subframe

Flooring & Stair Treads

Handrailing

Fencing

Fixings