

TILT-LOC - INSTALLATION GUIDE

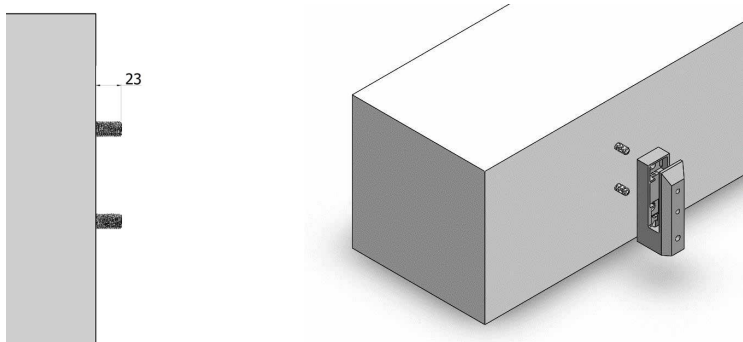


PRODUCT CODE

1822013

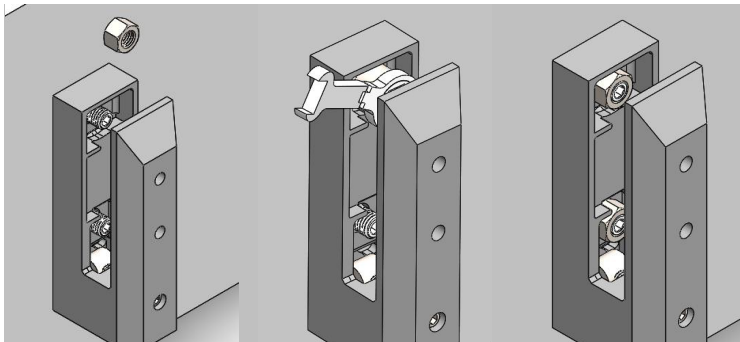
STEP 1

Drill holes and install screw, exposed thread length 23mm, slide on the spigot.



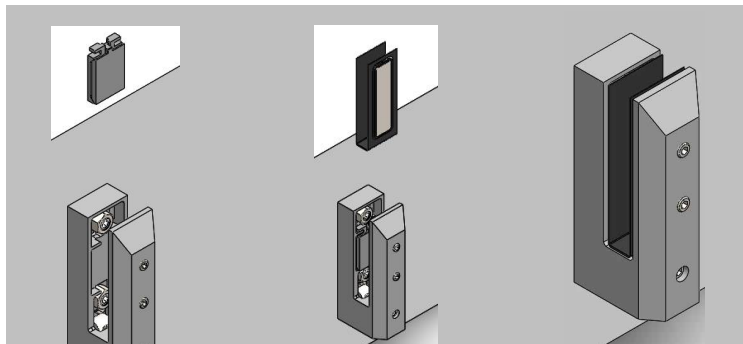
STEP 2

Tighten the nut using the adaptor included. Requires a 16mm spanner.



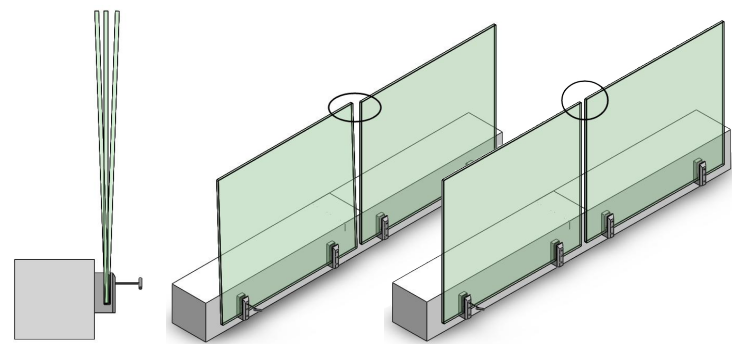
STEP 3

Install gaskets and screws.



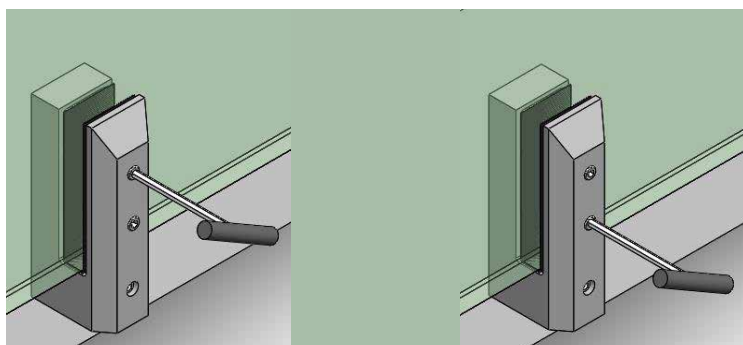
STEP 4

Install the glass, adjust the glass angle to align to the adjacent panel. (the adjustment range is $\pm 2^\circ$)



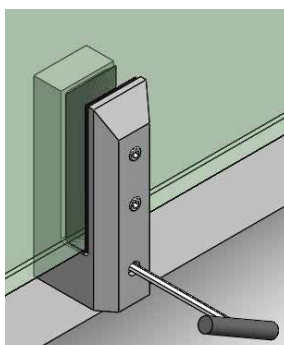
STEP 5

Tighten the screws using a 5mm Allen key.



STEP 6

Please pay attention when tightening the third screw, as this has the effect on increasing the clamping strength.



GASKET SPECIFICATIONS REQUIRED TO INSTALL DIFFERENT GLASS

Glass	Gasket
10 - 12mm	1 U gasket + 5 x 1mm flat gaskets
12 - 13.52mm	1 U gasket + 4 x 1mm flat gaskets
13.52 - 15mm	1 U gasket + 2 x 1mm flat gaskets
15 - 16.76mm	1 U gasket + 1 x 1mm flat gasket
16.76 - 17.52mm	1 U gasket

Whilst every effort has been made to ensure the accuracy of the information supplied. F.H. Brundle cannot be held responsible for any errors or omissions. This product must only be employed for its original intended use. Any other use is wrong and potentially dangerous. Installation must be carried out in full compliance with current regulations. F.H. Brundle cannot be held liable for any damages resulting from wrongful, erroneous or negligent use.



F.H.BRUNDLÉ
SERVING THE TRADE SINCE 1889

Tel. 01708 25 35 45

sales@brundle.com

www.fhbrundle.co.uk

April 2022