

MTM & AGT VIDEO RECEIVER

Entry panel with one button



Code	Description	Quantity
MTMSP1M	Surface mount with rainshield for 1 module	1
MTMFV1P	Single button audio/video front piece	1
MTMV/01	Audio/video module for X1 system	1
MTMTP1M	Frame with 1 module holder	1
VAS101	Supplementary power supply unit for video entry systems.	1
AGT V	Handset video intercom with soft-touch buttons, 5" LCD display, white	1





DIGITAL DIALING

The digital display allows a phone book with up to 7200 names to be displayed. During the programming phase you can choose the most appropriate search mode based on the number of users, a scrolling list or an alphabetical block search.

BUTTON COMPOSITION

On the call module, you can customise the amount of buttons required. Using a variety of modular front plates you can achieve maximum button composition flexibility. Available with 2, 3, 4 and 8 button front plates.

ACCESS CONTROL

The MTM range also includes 2 modules specifically for access control, one that is keypad operated and the other RDIF reader operated. Both modules are fitted with 2 on-board relay switches and 2 inputs for directly activating the relay switches.

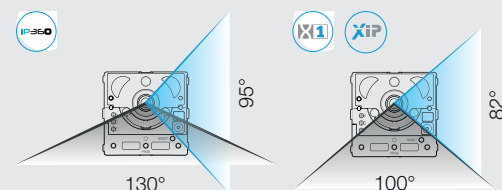
MTM has an extensive range of modular configurations, that are compatible with five different systems, allowing multiple functions to be carried out.

It's clean design has strong aesthetic appeal in all installation scenarios, while maintaining simple functionality.

Particular attention to detail has been paid to the finish, by eliminating the speaker holes, backlighting the keypad to give it a sleek look, and using satin aluminium for durability.



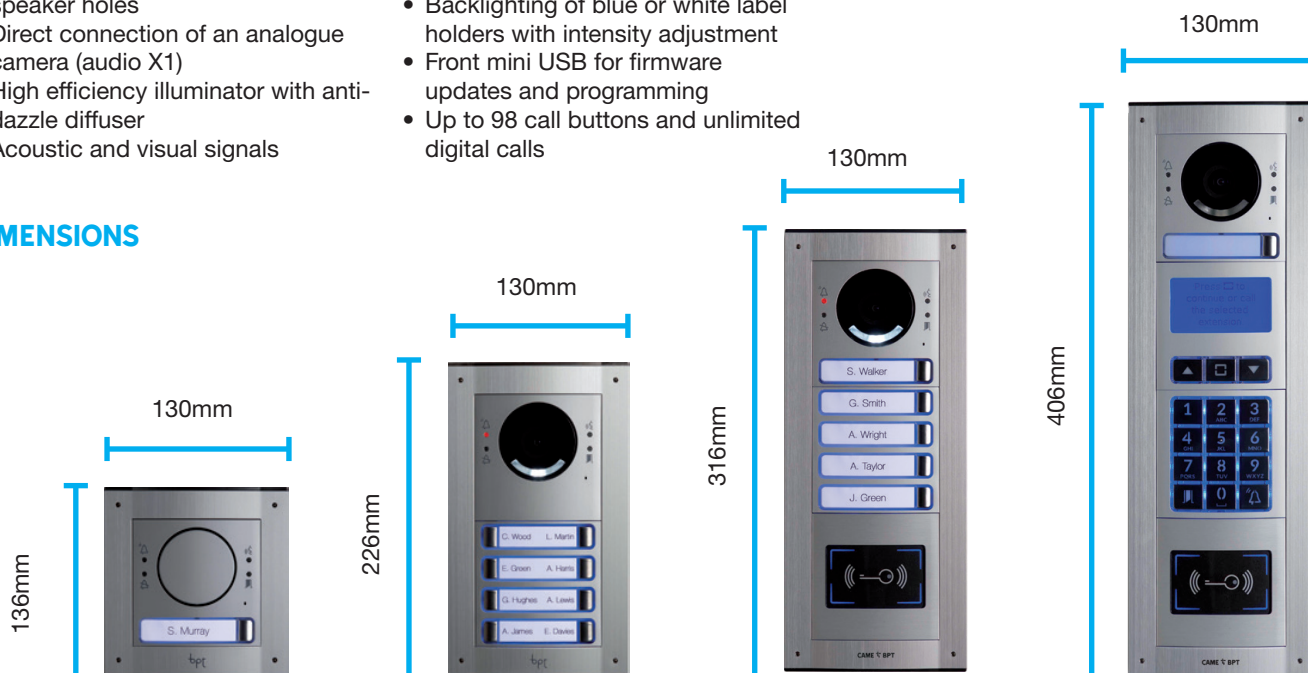
VISUAL ANGLE



FEATURES

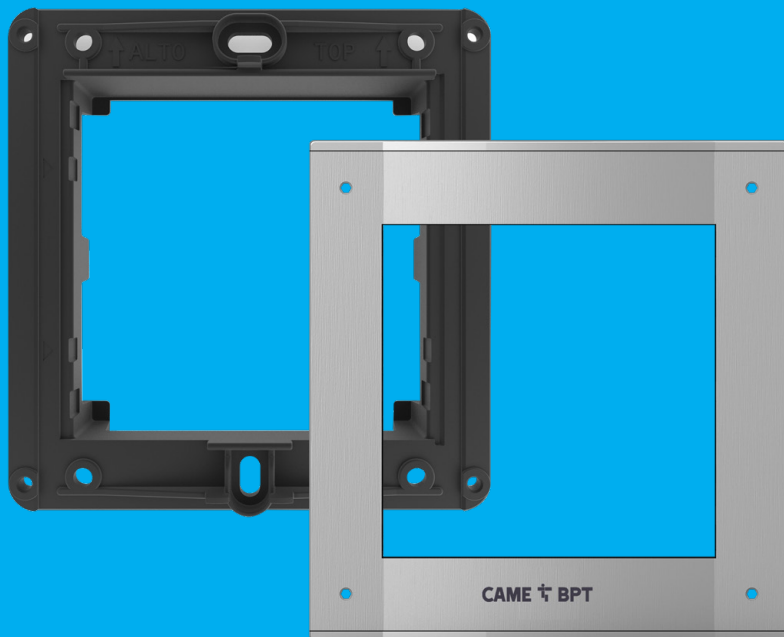
- Anodised and frosted natural aluminum finish
- Unique design without typical speaker holes
- Direct connection of an analogue camera (audio X1)
- High efficiency illuminator with anti-dazzle diffuser
- Acoustic and visual signals
- HD resolution (IP Camera version only) and HDR technology (High Dynamic Range)
- Backlighting of blue or white label holders with intensity adjustment
- Front mini USB for firmware updates and programming
- Up to 98 call buttons and unlimited digital calls

DIMENSIONS



MTMTP1M

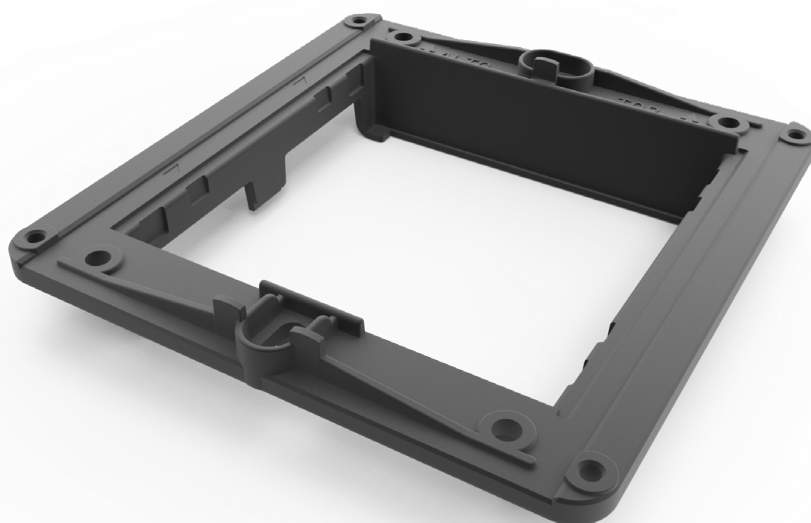
FRAME AND PLAQUE FOR 1-MODULE MTM.



Frame and plaque for 1-module MTM. Black painted aluminum frame with cataphoresis finish ensures high resistance to corrosion and rust. Brushed anodised aluminium plaque.

FEATURES

- Black painted aluminium
- Brushed anodised aluminium plaque



MTMFVIP

VIDEO FRONT PANEL

COMPATIBLE SYSTEMS



TECHNICAL DATA

Dimensions (mm)	85 x 85 x 2
Material	Anodized aluminium
Impact rating	IK07

1-button video intercom front panel made of natural anodized satin finish aluminum.

With polycarbonate bracket, it features pictograms to indicate the status of the system and 1 button with name tag size 66 x 15 mm. To pair up with an intercom module. Impact resistance rating IK07.

DIMENSIONS



MTMV/01

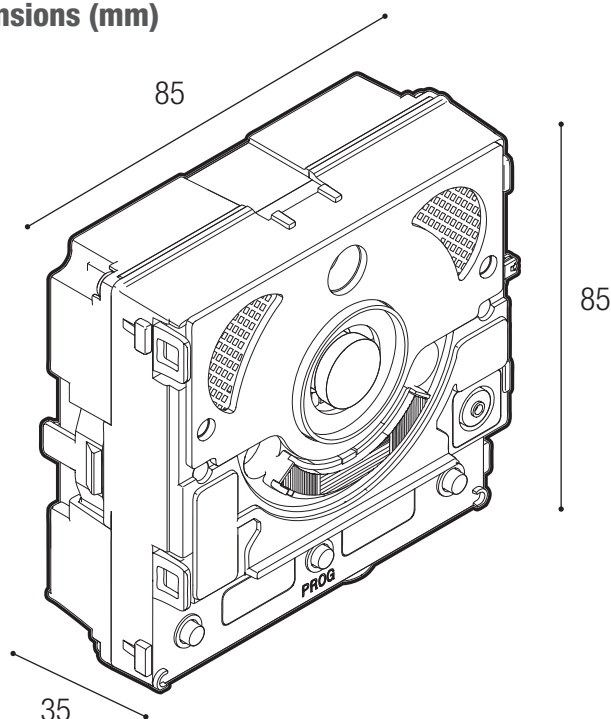
Intercom video module



Intercom video modules for X1 systems.

- Electronic module with techno-polymer body and 2 call buttons with double, blue or white, namecard backlighting.
- PAL/NTSC video camera sensor with 680 x 512 pixel resolution and built-in microprocessor for digital signal processing.
- Wide-eye lens with 100° horizontal and 82° vertical opening and digital zoom adjustment. Even illumination of the subject with 2 high-efficiency white LEDs and anti-glare diffuser.
- Featuring a local control for electric lock, auxiliary contact (1A, 30V max), inputs for door lock release button and for door status indication (programmable I/O), output for activation of outdoor cameras (programmable I/O).
- The front is equipped with LEDs for visual indication of the system status. It allows to adjust the audio volume of the microphone and speaker and the activation time of the electric lock.
- Manual or PC programming via MINI USB connector on the front. To be completed with a video intercom front panel.
- When combined with the corresponding front panel, it guarantees IP54 water and dust protection rating.

Dimensions (mm)



Main features

- 2 call buttons
- 2 on-board controls: electric lock and auxiliary control (1A, 30V max)
- "Wide-eye" lens, aperture 100° horizontally and 82° vertically
- High efficiency illuminator (adjustable brightness) with anti-glare diffuser
- LED pictograms for status alerts: door opening, active communication, call in progress and system busy
- Adjustable speaker, microphone and electric lock
- Dual blue or white backlit name tags with brightness settings
- Water and dust protection rating IP54
- MiniUSB front panel for firmware updating and programming.

Technical characteristics

MODELS	MTMV/01
Dimensions (mm)	85 x 85 x 35
Packaging dimensions (mm)	156 x 57 x 110
Power supply (V)	16 ÷ 18 DC
Consumption in stand-by mode (mA)	70
Max. absorption (mA)	220
Operating temperature (°C)	-25 ÷ +55
Protection rating (IP)	54
Video standard	PAL/NTSC
Video resolution (pixels)	680 x 512

VAS/101

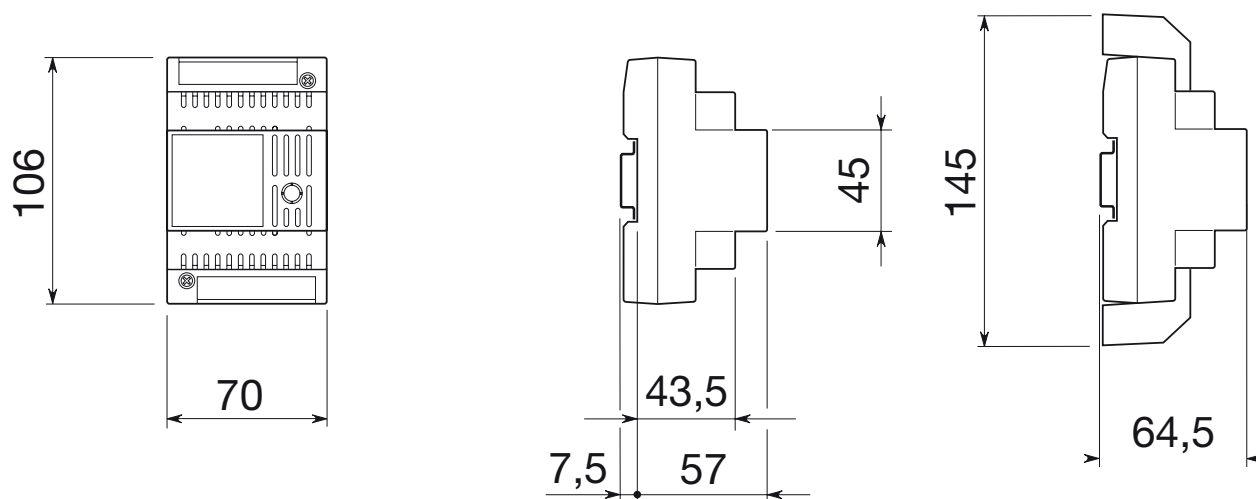
Power supply unit



18 V DC - 1000 mA additional power-supply unit.

- Plastic container for installing in EN50022 electrical panels, and four-DIN low modules.
- Full control board for powering, 18 V DC - 1000 mA max., entry panels and indoor receivers, protected from overloads or short circuits.
- 230 V AC 50/60 Hz supply from the power grid. IP30 water and dust protection rating rating.

Dimensions (mm)



Technical characteristics

MODELS	VAS/101
Power supply (V AC)	230
Current draw max (mA AC)	200
Maximum power dissipation (W)	10
Output voltage (V DC)	18
Continuous output current (A)	0.5
Intermittent output current with 1A/0.5A cycle ¹ 1/3'(A)	1
DIN EN50022 modules 35x7.5 (no.)	4
Storage temperature (°C)	-25 to +70
Operating temperature (°C)	0 to +35
Protection rating (IP)	30

AGT V

HANDSET VIDEO INTERCOM WITH SOFT-TOUCH BUTTONS,
5" LCD DISPLAY, WHITE

COMPATIBLE SYSTEMS



TECHNICAL DATA

Dimensions (mm)	205 x 190 x 44.5
Power supply by BUS (V)	15 ÷ 20 DC
Absorption by BUS (mA)	175
Consumption in stand-by mode (mA)	<1
Operating temperature (°C)	+5 ÷ +40
Protection rating (IP)	30
Video standard	PAL/NTSC
Display	5" TFT LCD
Colour	White

Wall monitor with 5" colour LCD display equipped with OSD for adjusting video parameters (brightness, colour, contrast). The 4 main touch buttons are used to manage the primary functions such as door opening, self-insertion of entry panel videos, ringtone adjustment/exclusion (with signaling LED when excluded) and the sending of a programmable auxiliary control. It allows managing the "gate opener" function and displays the status of the gate controlled by means of a signaling LED. It includes a bracket for wall mounting on horizontal or vertical 503 box and on Ø60 mm round box.

FEATURES

- 5" color display with OSD
- Handset with magnetic hang-up
- Concealed LED signal
- Soft-touch buttons
- Program melodies depending on the type of call
- Display colour, brightness and contrast adjustment via OSD
- Adjust/exclude ringtone, with alert LED when set to exclude mode
- UX2 for auxiliary functions and call to the porter
- Latch function (gate opener) for checking the status of external automations
- Automatic door-opener function

DIMENSIONS

ACCESSORIES



AGT KTV

Desktop stand. Plexiglass 10mm thick stand supplied with white RJ45 cable and terminal board cover with PMMA laminate - metallic grey



CAME