

## 230V SWING GATE KIT FOR A SINGLE GATE

Up to 400kg @ 3.5m or up to 800kg @ 2m



We would always advise you to spec your jobs with safety edges. When you see this symbol it is imperative that at least one is used.

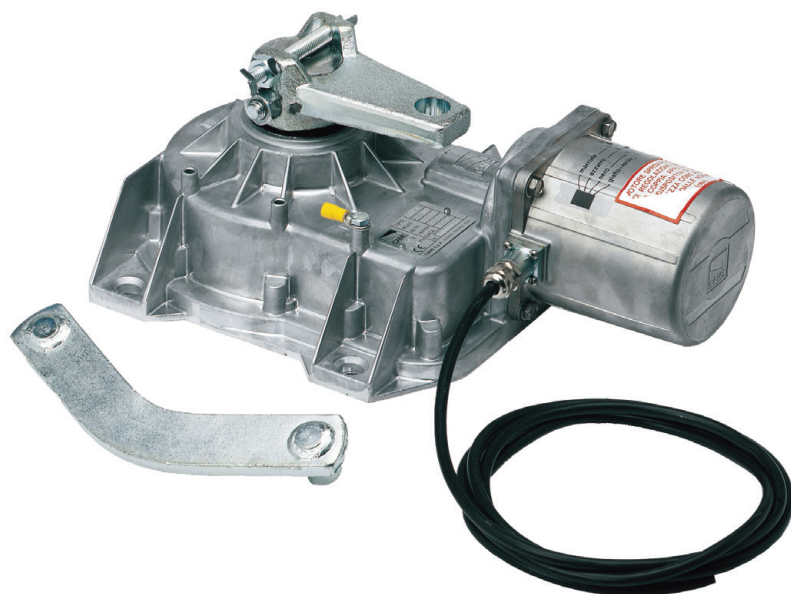


Code	Description	Quantity
001 <b>FROG-A</b>	Irreversible gearmotor for swing gates measuring up to 3.5 m per leaf, with built in adjustable opening and closing stops.	1
001 <b>FROG-CFN</b>	Foundation box in steel with cataphoresis treatment, complete with unlocking lever, fixing bracket to the gate and screw for adjusting the limit switch point in opening	1
002 <b>ZA3P</b>	Multifunction control panel for two-leaved swing gates, with limit-switch control and slow-down speed adjusting.	1
001 <b>A4364</b>	Release device with lever key.	1
001 <b>AF43S</b>	Plug-in radio-frequency control card	1
<b>806TS-0102</b>	TOPD4FKS - Four-channel dual frequency transmitter with self-learning function, black colour. (16,777,216 in TAM mode, 4,096 combinations in TOP mode)	2
001 <b>TOP-A433N</b>	Tuned Antenna.	1
001 <b>DIR10</b>	Pair of 12 - 24 V AC - DC outdoor photocells – range 10 m.	1



# FROG-A

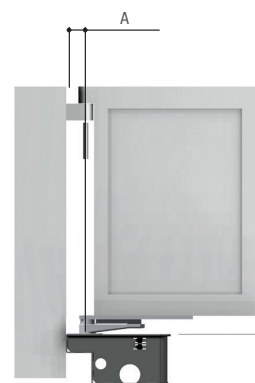
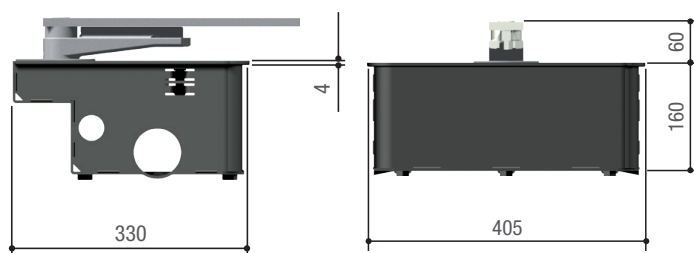
Gate leaves of up to 1.8 m



## Below-ground solution suitable for fitting to gates in single homes and apartment buildings.

- The invisible solution to power your gate.
- High degree of protection against weathering (IP67).
- System automatically resets after the gate is manually released.
- Can open up to 180° (with the FL-180 accessory).
- Special steel foundation box with rustproof coating. Adjustable built-in leaf stops.

## Dimensions (mm)



## Operational limits

MODEL	FROG-A			
Max. width of leaf (m)	*3,5	*2,5	2	-
Max. weight of leaf (kg)	400	600	800	-

NOTES: \* We suggest fitting an electric lock onto the gate leaf.

## Technical characteristics

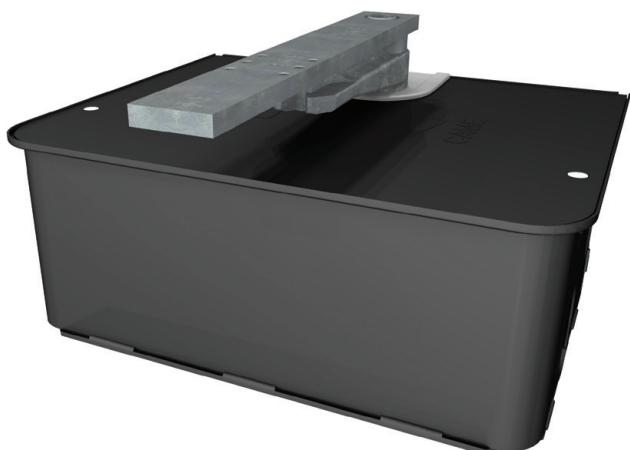
MODELS	FROG-A
Protection rating (IP)	67
Power supply (V - 50/60 Hz)	230 AC
Power supply to motor (V)	230 AC 50/60 Hz
Absorption (A)	1,9
Power (W)	200
Maneuvering time at 90° (s)	18
Duty/cycle (%)	30
Torque (Nm)	320
Operating temperature (°C)	-20 ÷ +55
Motor's heat protection (°C)	150

# FROG-CFN

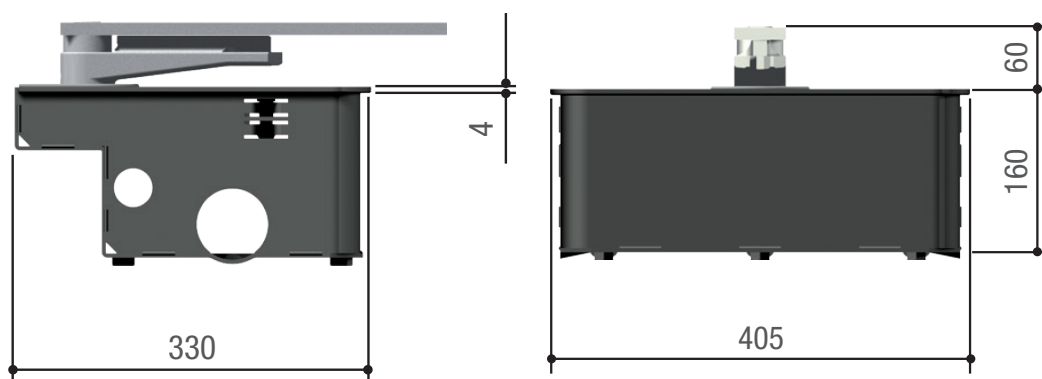
Foundation box

## Foundation box in steel with cataphoresis treatment

- Complete with unlocking lever, fixing bracket to the gate and screw for adjusting the limit switch point in opening

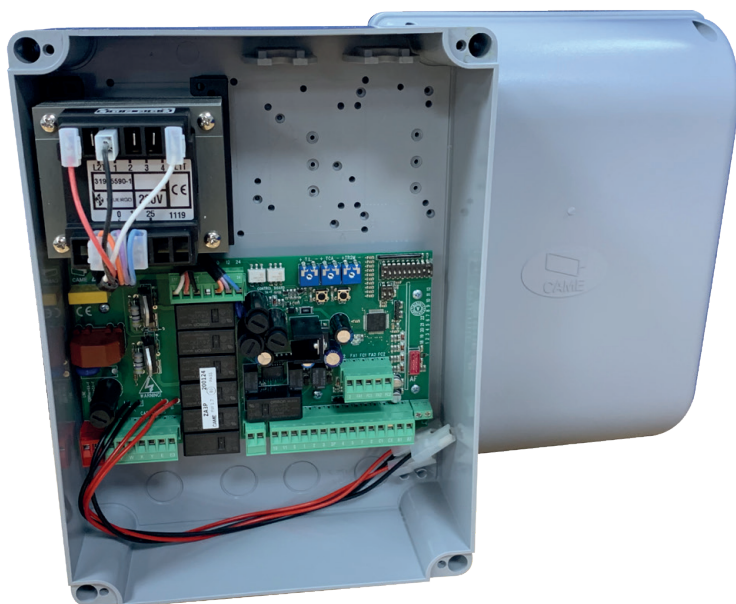


## Dimensions (mm)



# ZA3P

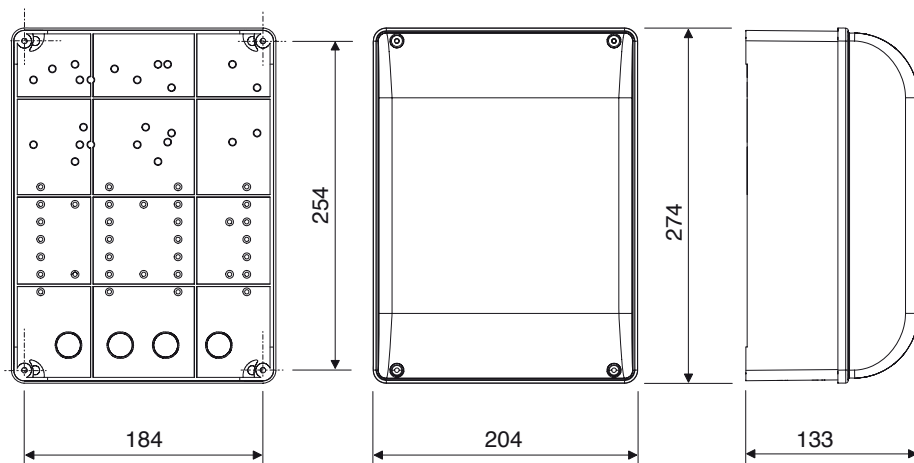
Control panel



## Control panel for 230V gearmotors

- Multi-feature control panel for swing gates, with manageable limit-switches and slow-down speed adjusting.

## Dimensions (mm)



## Technical characteristics

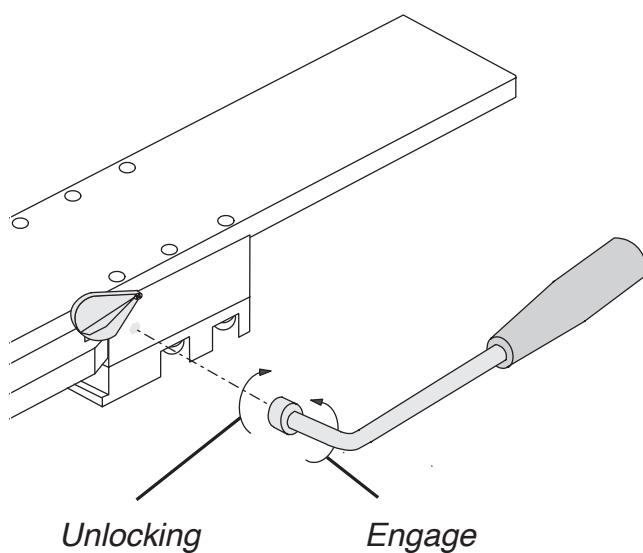
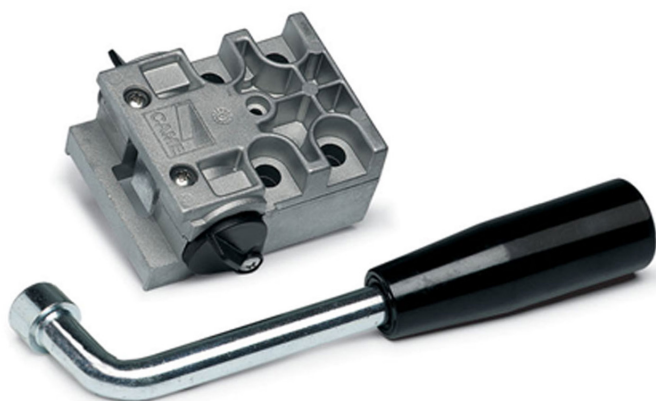
MODEL	ZA3P
Protection rating (IP)	54
Power supply (V - 50/60 Hz)	230 AC
Absorption when idle (mA)	60
Max. power* (W)	600
Casing material	ABS
Operating temperature (°C)	-20 to +55
Insulation class	□

# A4364

Mechanical release key

## Mechanical release device with lever key for Frog motor.

- Unlocking mechanism
- Release device lever key
- 4 M8 x 35 cheese headed hexagonal socket screws
- 4 safety lock washer



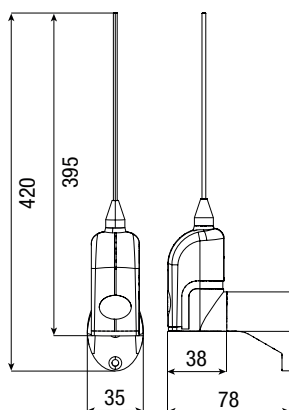
# ACCESSORIES

## TOPA433N

Tuned Antenna for 433.92Mhz



Dimensions (mm)



### Operational limits

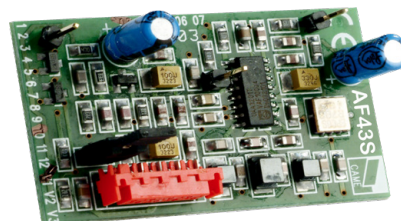
MODELS	TA433N
Max. range of radio (m)	50 ÷ 150

### Technical characteristics

MODELS	TA433N
Radio signal frequency (Mhz)	433.92Mhz

## AF43S

Radio frequency control card 433.92MHz



- Dip-switches for code and function selection
- Function enabling button
- Red signalling LED
- Green signalling LED
- Backup board
- Plug-in connector on receivers

### Technical characteristics

MODELS	AF43S
Power supply (V±10%)	5
Current draw (mA)	5.5
Encoding type	ASK
Operating temperature (°C)	-20 to +55
Sensitivity (dBm)	-107

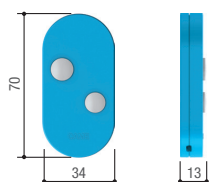
## TOPD4FKS

Radio command at 433.92 and 868.35 Mhz fixed code



- Manages several operators on different frequencies.
- One device to manage two frequencies, that is, 433.92 MHz and 868.35 MHz.
- Uses only one CR2032 battery.
- Flat battery alert
- No setting required when selecting the frequency
- Comes in two-channel and four-channel versions.
- Available in six different colours.
- Surface-mounted receiver modules 806RV-0010 and 806RV-0020 - CAME KEY compatible.

Dimensions (mm)



### Operational limits

MODELS	806TS-0102
Max. range of radio (m)	50 ÷ 150

### Technical characteristics

MODELS	806TS-0102
Combinations	4.096 - 16.777.216
Radio signal frequency (Mhz)	433,92 - 868,35
Operating temperature (°C)	-20 ÷ +55
Material	POLYCARBONATE

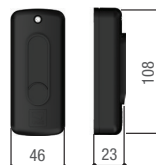
## DIR10

Photocells



- Control the gate's area of movement
- Infrared beam, even synchronised, to prevent any external signal disturbances.
- For the DIR series photocells, there is a double-height post, and a new PVC version of the post, for installing in entry and exit points where heavy vehicles drive through.
- High degree of protection against weathering.

Dimensions (mm)



### Operational limits

MODELS	DIR10
Max. range of radio (m)	10

### Technical characteristics

MODELS	DIR10
Protection rating (IP)	54
Power supply (V)	12 - 24 AC - DC
Absorption	60
Max. rating of 24 V (A) relay contacts	0,5
Operating temperature (°C)	-20 ÷ +55
Material	ABS - POLYCARBONATE